



US007778682B2

(12) **United States Patent**
Kumar et al.

(10) **Patent No.:** **US 7,778,682 B2**

(45) **Date of Patent:** ***Aug. 17, 2010**

(54) **BIOPSY AND SAMPLING NEEDLE
ANTENNAS FOR MAGNETIC RESONANCE
IMAGING-GUIDED BIOPSIES**

(75) Inventors: **Ananda Kumar**, Baltimore, MD (US);
Ergin Atalar, Columbia, MD (US);
Ogan Ocali, Sunnyvale, CA (US)

(73) Assignee: **Johns Hopkins University**, Baltimore,
MD (US)

(*) Notice: Subject to any disclaimer, the term of this
patent is extended or adjusted under 35
U.S.C. 154(b) by 549 days.

This patent is subject to a terminal dis-
claimer.

(21) Appl. No.: **11/761,561**

(22) Filed: **Jun. 12, 2007**

(65) **Prior Publication Data**

US 2007/0238978 A1 Oct. 11, 2007

Related U.S. Application Data

(60) Division of application No. 10/131,601, filed on Apr.
24, 2002, now Pat. No. 7,236,816, which is a contin-
uation-in-part of application No. 09/360,144, filed on
Jul. 26, 1999, now abandoned, which is a continuation-
in-part of application No. 08/638,934, filed on Apr. 25,
1996, now Pat. No. 5,928,145.

(60) Provisional application No. 60/286,271, filed on Apr.
24, 2001.

(51) **Int. Cl.**
A61B 5/055 (2006.01)

(52) **U.S. Cl.** **600/411; 600/564**

(58) **Field of Classification Search** **600/410,**
600/411, 423, 562, 564, 567; 324/307, 309,
324/318, 322

See application file for complete search history.

(56) **References Cited**

U.S. PATENT DOCUMENTS

3,342,175 A 9/1967 Bulloch 128/2

(Continued)

FOREIGN PATENT DOCUMENTS

EP 0 466 424 A1 1/1992

(Continued)

OTHER PUBLICATIONS

International Search Report, PCT Application No. PCT/US
02/12867, mailed Aug. 21, 2002.

(Continued)

Primary Examiner—Brian Casler

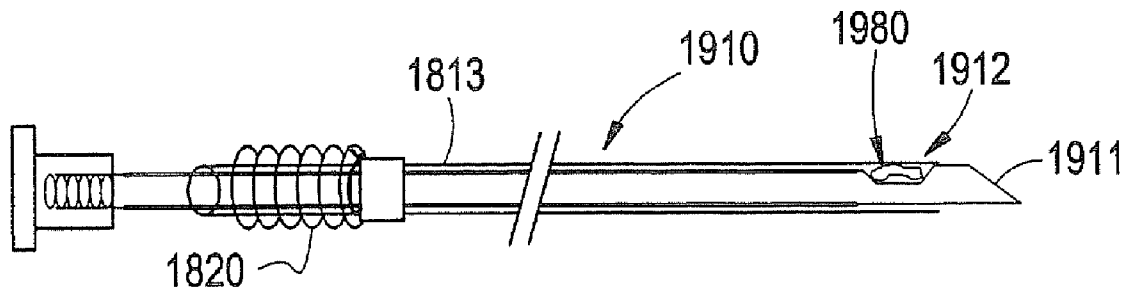
Assistant Examiner—Jonathan G Cwern

(74) *Attorney, Agent, or Firm*—Frommer Lawrence & Haug
LLP; Bruce E. Black

(57) **ABSTRACT**

Herein is disclosed a magnetic resonance imaging antenna,
including an inner conductor, an outer shield slideably dis-
placeable with respect to the inner conductor, and an insulator
electrically insulating the inner conductor from the outer
shield. Herein is disclosed a biopsy needle antenna, including
a magnetic resonance imaging antenna, having an outer
shield, and an inner conductor electrically insulated from the
outer shield by a dielectric; and a biopsy needle electrically
connected to the inner conductor and electrically insulated
from the outer shield by the dielectric. Herein is disclosed a
method of obtaining a sample with magnetic resonance imag-
ing guidance, including providing a sampling needle mag-
netic resonance imaging antenna, advancing the antenna to a
structure from which the sample is to be taken, detecting
magnetic resonance data by the antenna, and coupling the
sample to the antenna.

17 Claims, 13 Drawing Sheets



U.S. PATENT DOCUMENTS

4,431,005 A	2/1984	McCormick	128/656	5,598,097 A	1/1997	Scholes et al.	324/316
4,445,501 A	5/1984	Bresler	128/1.5	5,609,606 A	3/1997	O'Boyle	606/194
4,572,198 A	2/1986	Codrington	128/653	5,611,807 A	3/1997	O'Boyle	606/169
4,643,186 A	2/1987	Rosen et al.	128/303.1	5,617,874 A	4/1997	Baran	128/753
4,672,972 A	6/1987	Berke	128/653	5,623,241 A	4/1997	Minkoff	335/296
4,766,381 A	8/1988	Conturo et al.	324/309	5,660,180 A	8/1997	Malinowski et al.	128/660.03
4,776,341 A	10/1988	Bachus et al.	128/653	5,682,897 A	11/1997	Pomeranz	128/662.06
4,791,372 A	12/1988	Kirk et al.	324/318	5,699,801 A	12/1997	Atalar et al.	128/653.2
4,793,356 A	12/1988	Misic et al.	128/653	5,715,825 A	2/1998	Crowley	128/602.06
4,813,429 A	3/1989	Eshel et al.	128/736	5,728,079 A	3/1998	Weber et al.	604/280
4,823,812 A	4/1989	Eshel et al.	128/804	5,738,632 A	4/1998	Karasawa	600/410
4,858,613 A	8/1989	Fry et al.	128/660.03	5,775,338 A	7/1998	Hastings	128/898
4,897,604 A	1/1990	Carlson et al.	324/318	5,792,055 A	8/1998	McKinnon	600/410
4,922,204 A	5/1990	Duerr et al.	324/322	5,833,608 A	11/1998	Acker	600/409
4,932,411 A	6/1990	Fritschy et al.	128/653	5,833,632 A	11/1998	Jacobsen et al.	600/585
4,960,106 A	10/1990	Kubokawa	128/6	5,840,031 A	11/1998	Crowley	600/440
5,019,075 A	5/1991	Spears et al.	606/7	5,868,674 A	2/1999	Glowinski et al.	600/410
5,035,231 A	7/1991	Kubokawa et al.	128/6	5,916,162 A	6/1999	Snelten et al.	600/411
5,049,821 A *	9/1991	Duensing et al.	324/322	5,928,145 A	7/1999	Ocali et al.	600/410
5,050,607 A	9/1991	Bradley et al.	128/653 A	5,938,609 A	8/1999	Pomeranz	600/439
5,090,959 A	2/1992	Samson et al.	604/96	5,938,692 A	8/1999	Rudie	607/101
5,095,911 A	3/1992	Pomeranz	128/662.06	5,964,705 A	10/1999	Truwit et al.	600/423
5,099,208 A	3/1992	Fitzpatrick et al.	324/312	5,968,052 A	10/1999	Sullivan, III et al.	606/108
5,167,233 A	12/1992	Eberle et al.	128/662.06	6,004,269 A	12/1999	Crowley et al.	600/439
5,170,789 A	12/1992	Narayan et al.	128/653.5	6,011,995 A	1/2000	Guglielmi et al.	607/99
5,190,046 A	3/1993	Shturman	128/662.06	6,019,737 A	2/2000	Murata	600/585
5,211,165 A	5/1993	Dumoulin et al.	128/653.1	6,026,316 A	2/2000	Kucharczyk et al.	600/420
5,211,166 A	5/1993	Sepponen	128/653.5	6,031,375 A	2/2000	Atalar et al.	324/307
5,217,010 A	6/1993	Tsitlik et al.	128/419 PG	6,032,078 A	2/2000	Rudie	607/101
5,260,658 A	11/1993	Greim et al.	324/322	6,051,974 A	4/2000	Reisker et al.	324/318
5,270,485 A	12/1993	Jacobsen	174/15.1	6,058,323 A	5/2000	Lemelson	600/408
5,271,400 A	12/1993	Dumoulin et al.	128/653.2	6,061,587 A	5/2000	Kurcharczyk et al.	600/411
5,293,872 A	3/1994	Alfano et al.	128/664	6,104,943 A	8/2000	Frederick et al.	600/410
5,294,886 A	3/1994	Duerr	324/318	6,171,240 B1	1/2001	Young et al.	600/410
5,307,808 A	5/1994	Dumoulin et al.	128/653.2	6,233,474 B1	5/2001	Lemelson	600/411
5,307,814 A	5/1994	Kressel et al.	128/653.5	6,263,229 B1	7/2001	Atalar et al.	600/423
5,318,025 A	6/1994	Dumoulin et al.	128/653.2	6,306,132 B1	10/2001	Moorman et al.	606/41
5,323,778 A	6/1994	Kandarpa et al.	128/653.2	6,377,837 B1	4/2002	Coutts	600/423
5,347,221 A	9/1994	Rubinson	324/318	6,549,800 B1	4/2003	Atalar et al.	600/423
5,348,010 A	9/1994	Schnall et al.	128/653.2	2001/0056232 A1	12/2001	Lardo et al.	600/423
5,352,979 A	10/1994	Conturo	324/307	2002/0040185 A1	4/2002	Atalar et al.	600/423
5,355,087 A	10/1994	Claiborne et al.	324/322	2002/0045816 A1	4/2002	Atalar et al.	600/423
5,358,515 A	10/1994	Hürter et al.	607/101	2003/0028095 A1	2/2003	Tulley et al.	600/422
5,365,928 A	11/1994	Rhinehart et al.	128/653.5	2004/0199071 A1	10/2004	Lardo et al.	
5,370,644 A	12/1994	Langberg	606/33				
5,372,138 A	12/1994	Crowley et al.	128/662.06				
5,375,596 A	12/1994	Twiss et al.	128/653.1				
5,400,787 A	3/1995	Marandos	128/653.5				
5,413,104 A	5/1995	Buijs et al.	128/653.5				
5,419,325 A	5/1995	Dumoulin et al.	128/653.2				
5,421,338 A	6/1995	Crowley et al.	128/662.06				
5,429,132 A	7/1995	Guy et al.	128/653.1				
5,435,302 A	7/1995	Lenkinski et al.	600/422				
5,437,277 A	8/1995	Dumoulin et al.	128/653.1				
5,439,000 A	8/1995	Gunderson et al.	128/664				
5,443,066 A	8/1995	Dumoulin et al.	128/653.1				
5,443,489 A	8/1995	Ben-Haim	607/115				
5,447,156 A	9/1995	Dumoulin et al.	128/653.2				
5,451,232 A	9/1995	Rhinehart et al.	606/192				
5,451,774 A	9/1995	Jacobsen	250/227.24				
5,462,055 A	10/1995	Casey et al.	128/653.5				
5,476,095 A	12/1995	Schnall et al.	128/653.2				
5,498,261 A	3/1996	Strul	606/29				
5,507,743 A	4/1996	Edwards et al.	606/41				
5,512,825 A	4/1996	Atalar et al.	324/309				
5,520,644 A	5/1996	Imran	604/95				
5,524,630 A	6/1996	Crowley	128/662.06				
5,540,679 A	7/1996	Fram et al.	606/27				
5,558,093 A	9/1996	Pomeranz	128/660.03				
5,578,008 A	11/1996	Hara	604/96				
5,588,432 A	12/1996	Crowley	128/660.03				

FOREIGN PATENT DOCUMENTS

EP	0 557 127	A2	8/1993
EP	0673621	A1	9/1995
EP	0 557 127	A3	3/1996
JP	6-70902		3/1994
WO	WO 98/52461		11/1998
WO	WO 99/27390		6/1999
WO	WO 00/64003		10/2000

OTHER PUBLICATIONS

Lardo, "Real-Time Magnetic Resonance Imaging: Diagnostic and Interventional Applications" *Pediatr Cardiol* 21.80,98, 2000.

Atalar et al.; "High Resolution Intravascular MRI and MRS using a Catheter Receiver Coil," *Magnetic Resonance in Medicine*, 36:596-605 (1996).

Edelman et al.; "Magnetic Resonance Imaging" *NEJM*. 328: 708-716 (1993).

Farmer et al.; "Implanted Coil MR Microscopy of Renal Pathology", *Magn. Reson. Med.*, 10: 310-323 (1989).

Garwood et al.; "Magnetic Resonance Imaging with Adiabatic Using a Single Surface Coil for RF Transmission and Signal Detection", *Magnetic Resonance in Medicine* 9: 25-34 (1989).

Hoult et al.; "The Signal-to-Noise Ratio of the Nuclear Magnetic Resonance Experiment" *J. Magn. Reson.*, 24: 71-85 (1976).

Hoult; "Rotating Frame Zeugmatography", *Phil. Trans. R. Soc. Lond. B*. 289: 543-547 (1980).

Jolesz et al. ; "Interventional Magnetic Resonance Therapy", Seminars in Interventional Radiology , 12: 20-27 (1995).
Ocali et al.; "Intravascular Magnetic Resonance Imaging Using a Loopless Catheter Antenna", MRM, 37: 112-118 (1997).

Silverman et al.; "Interactive MR-guided Biopsy in an Open configuration MR Imaging System", Radiology, 197: 175-181 (1995).

* cited by examiner

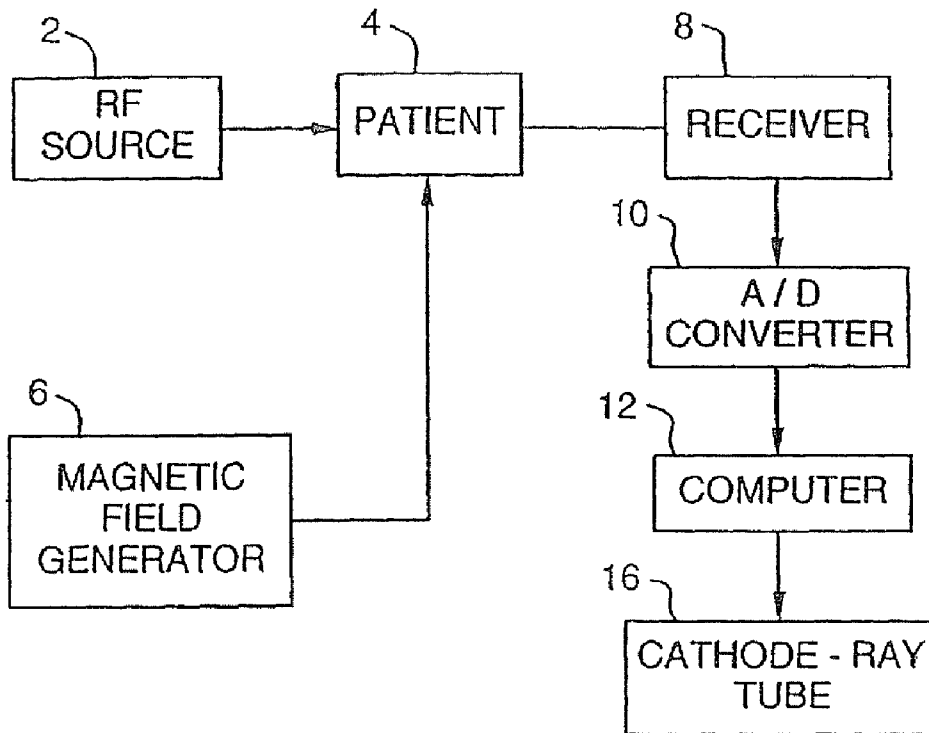


FIG. 1

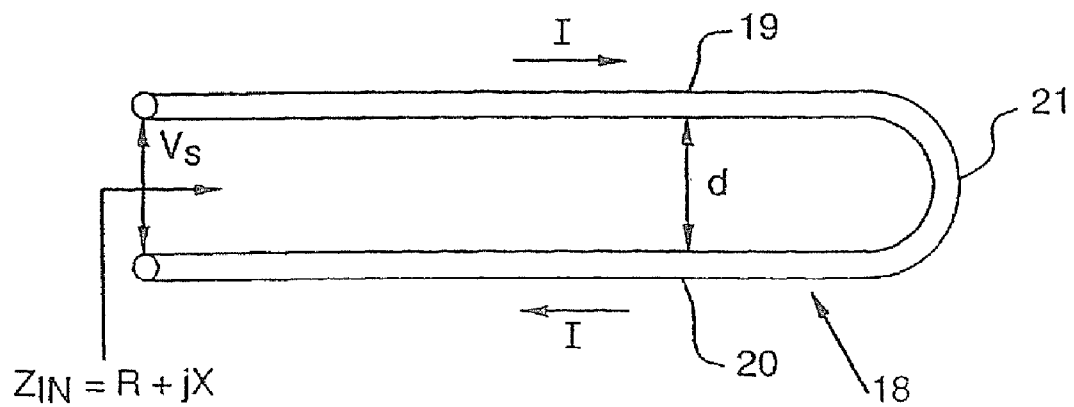


FIG. 2

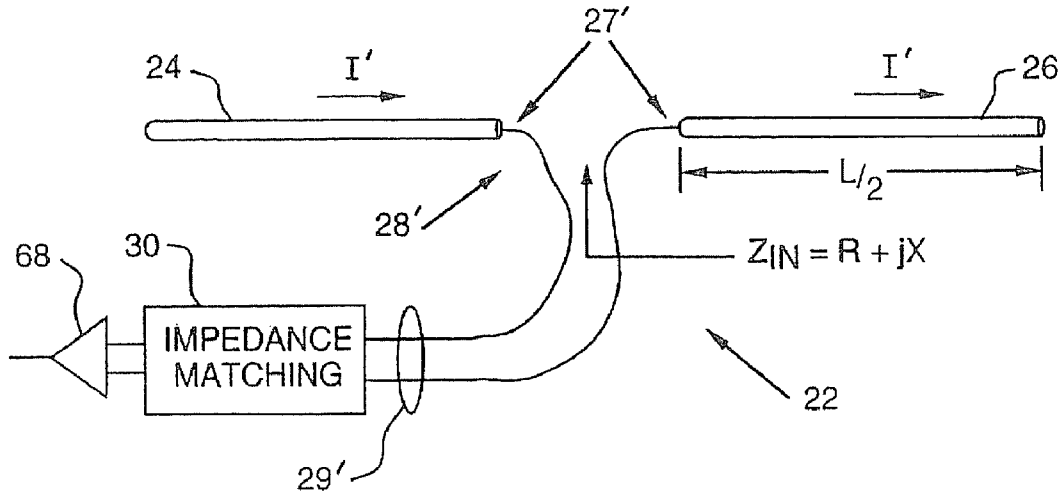


FIG. 3

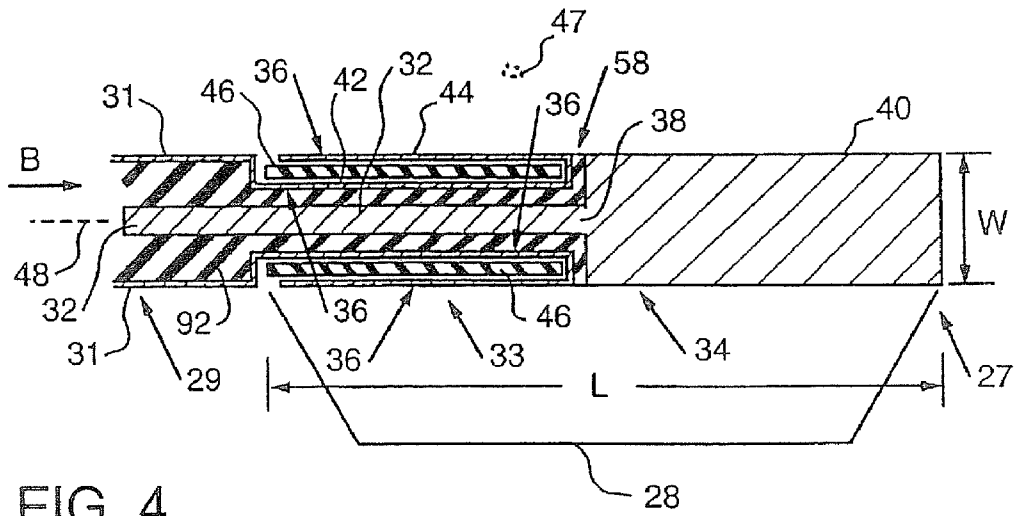


FIG. 4

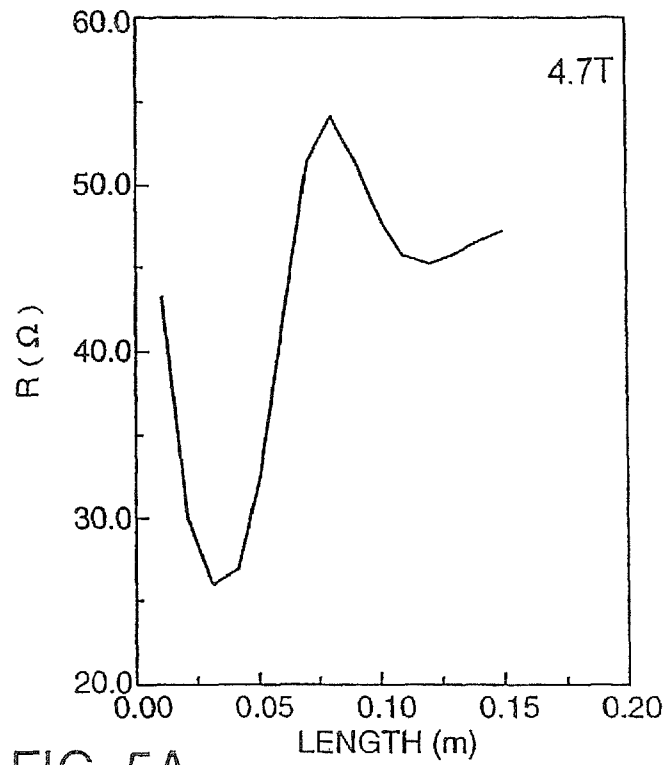


FIG. 5A

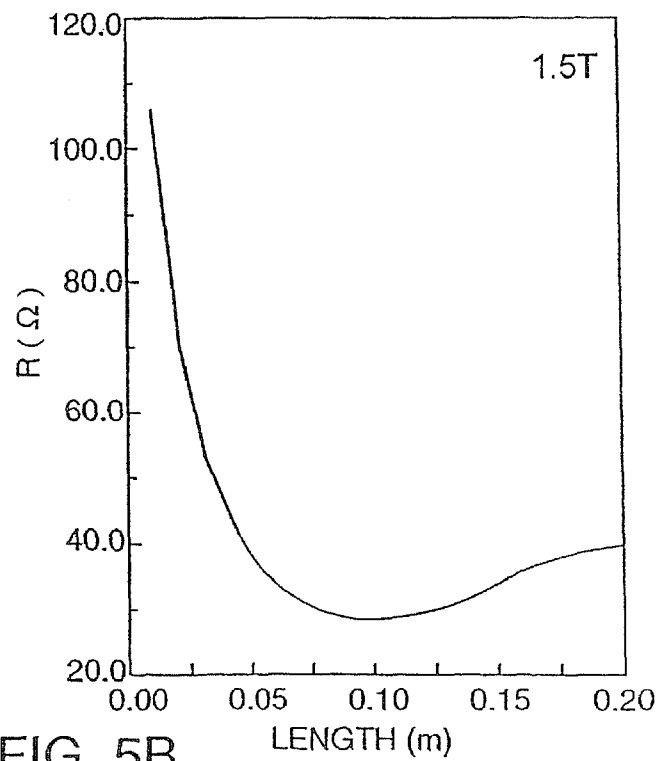


FIG. 5B

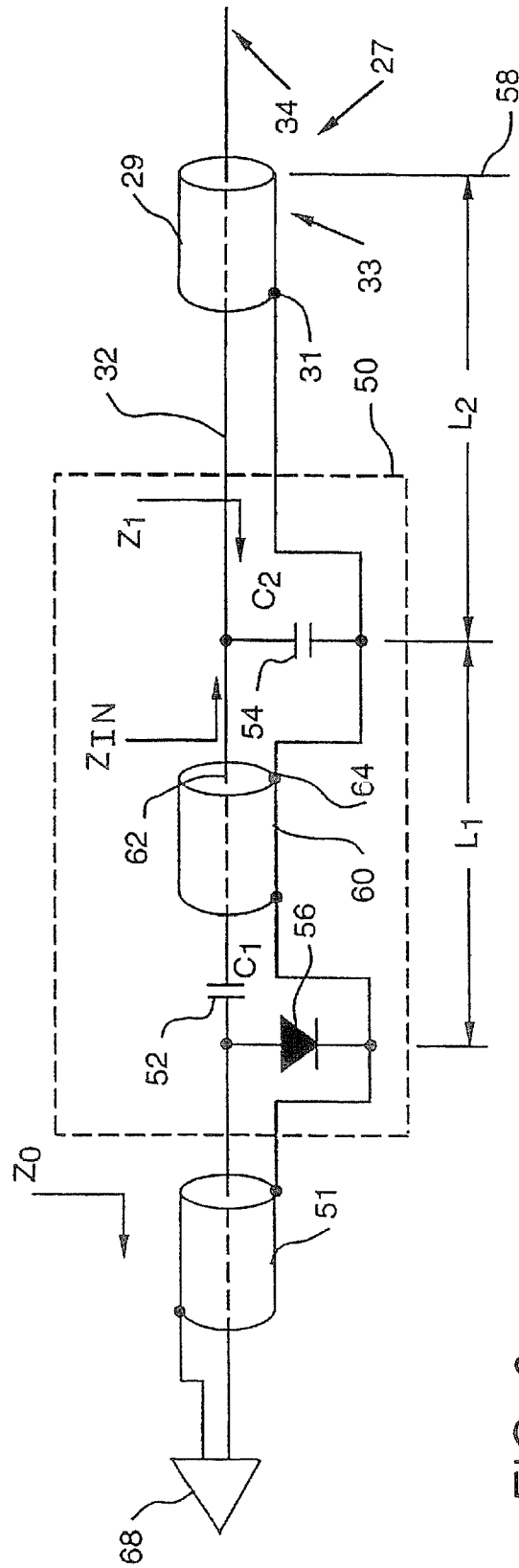


FIG. 6

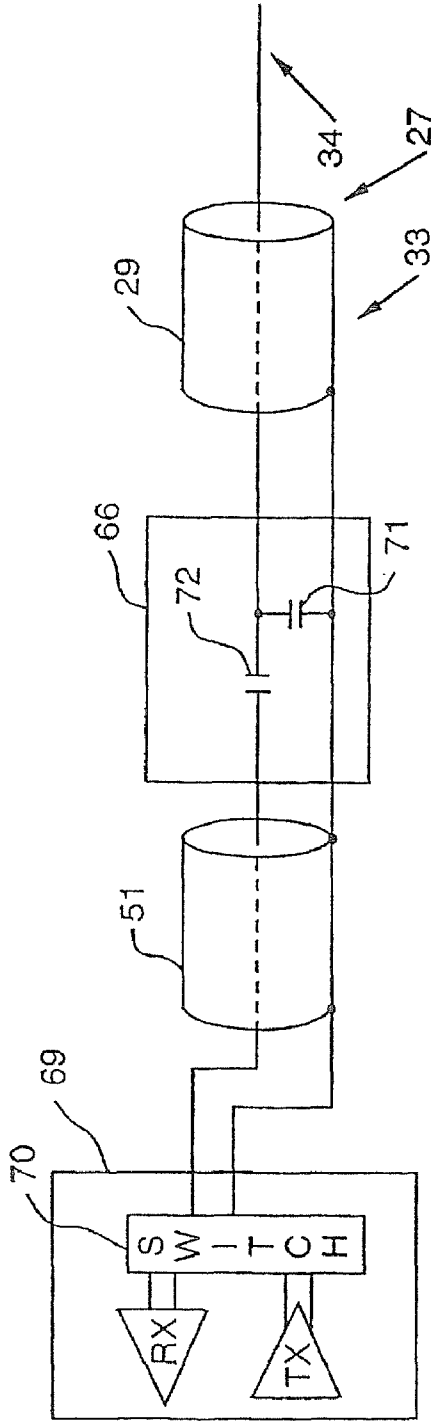


FIG. 7

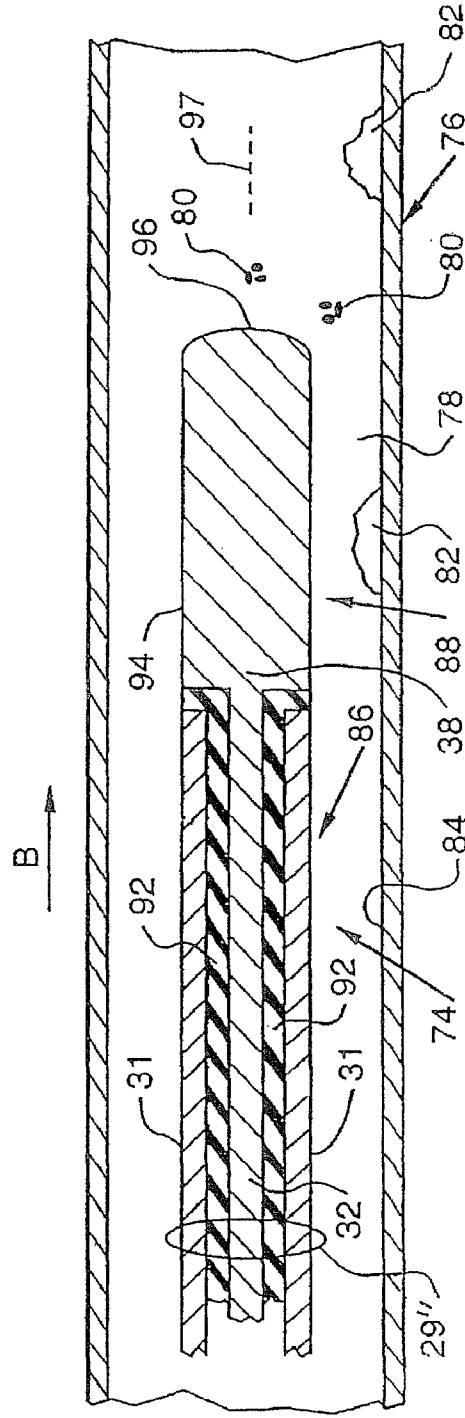


FIG. 8

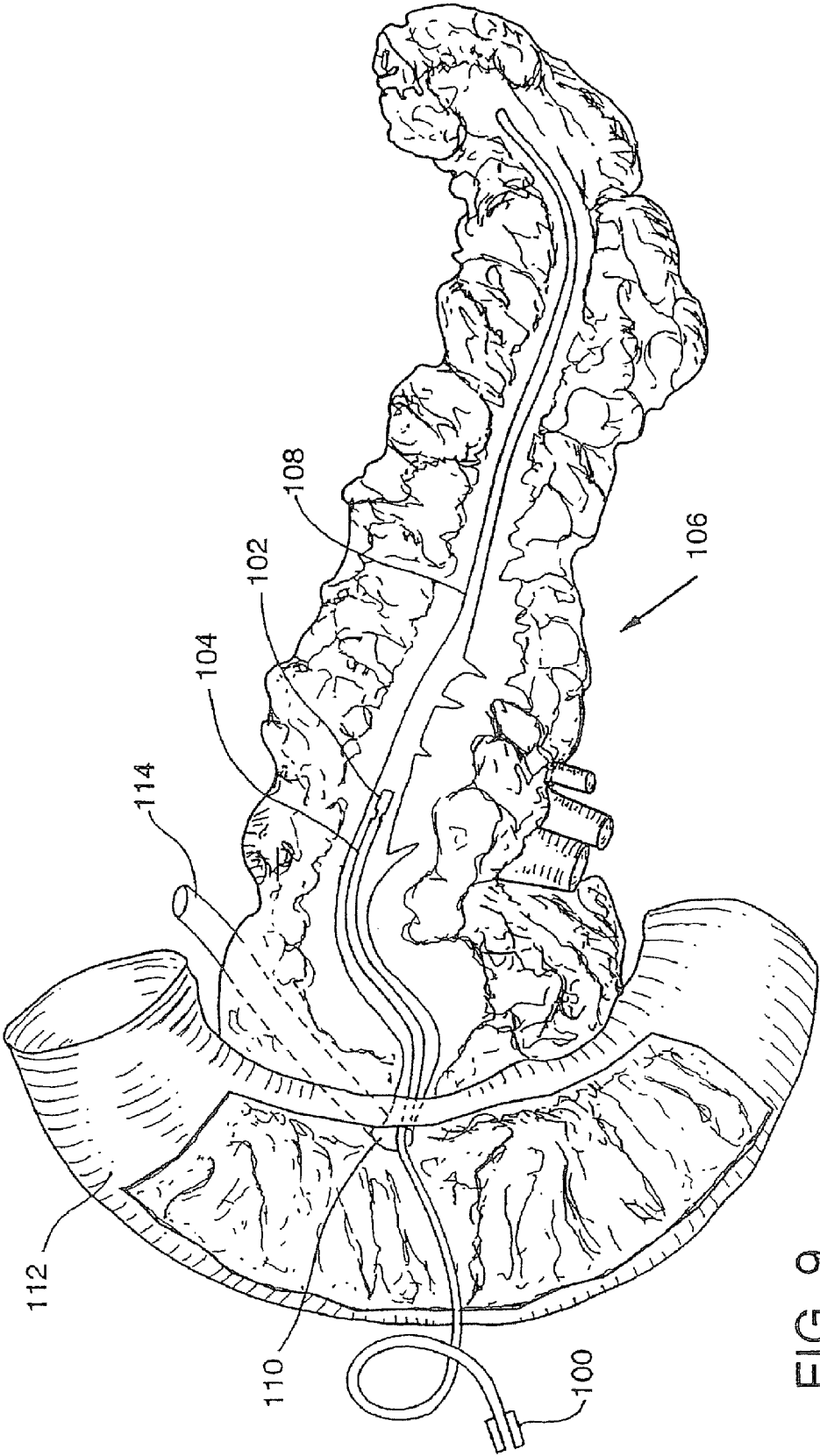
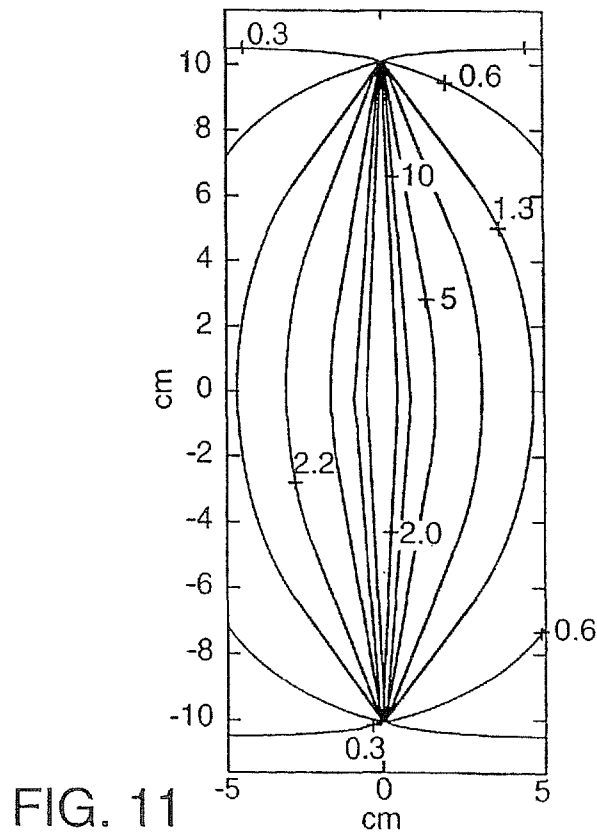
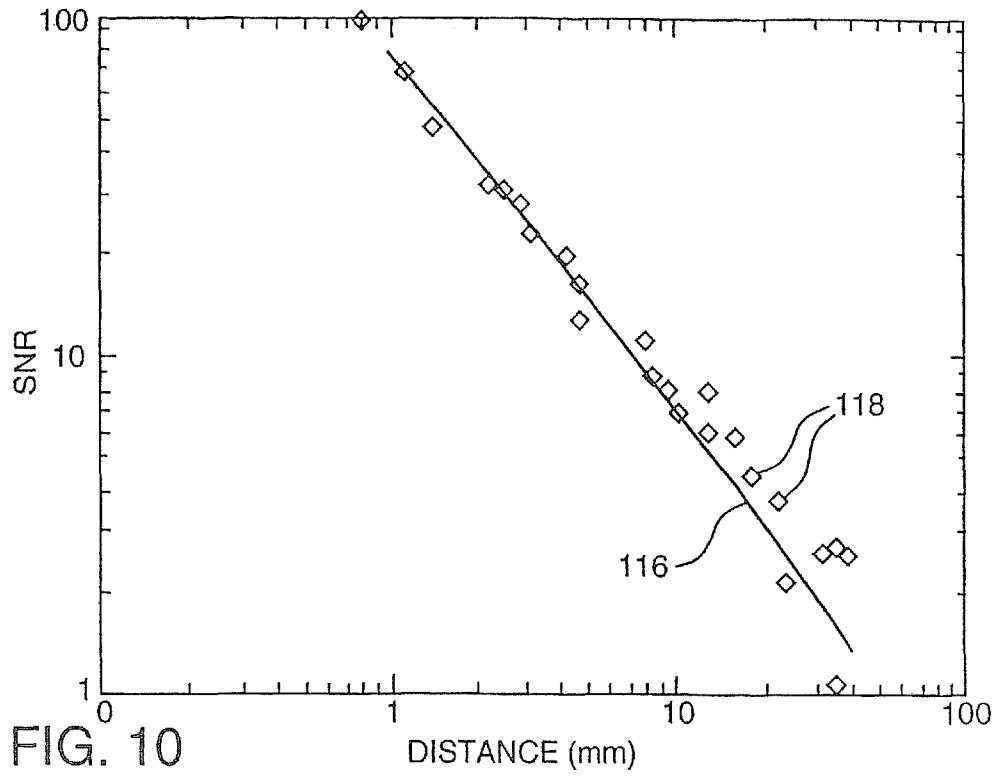


FIG. 9



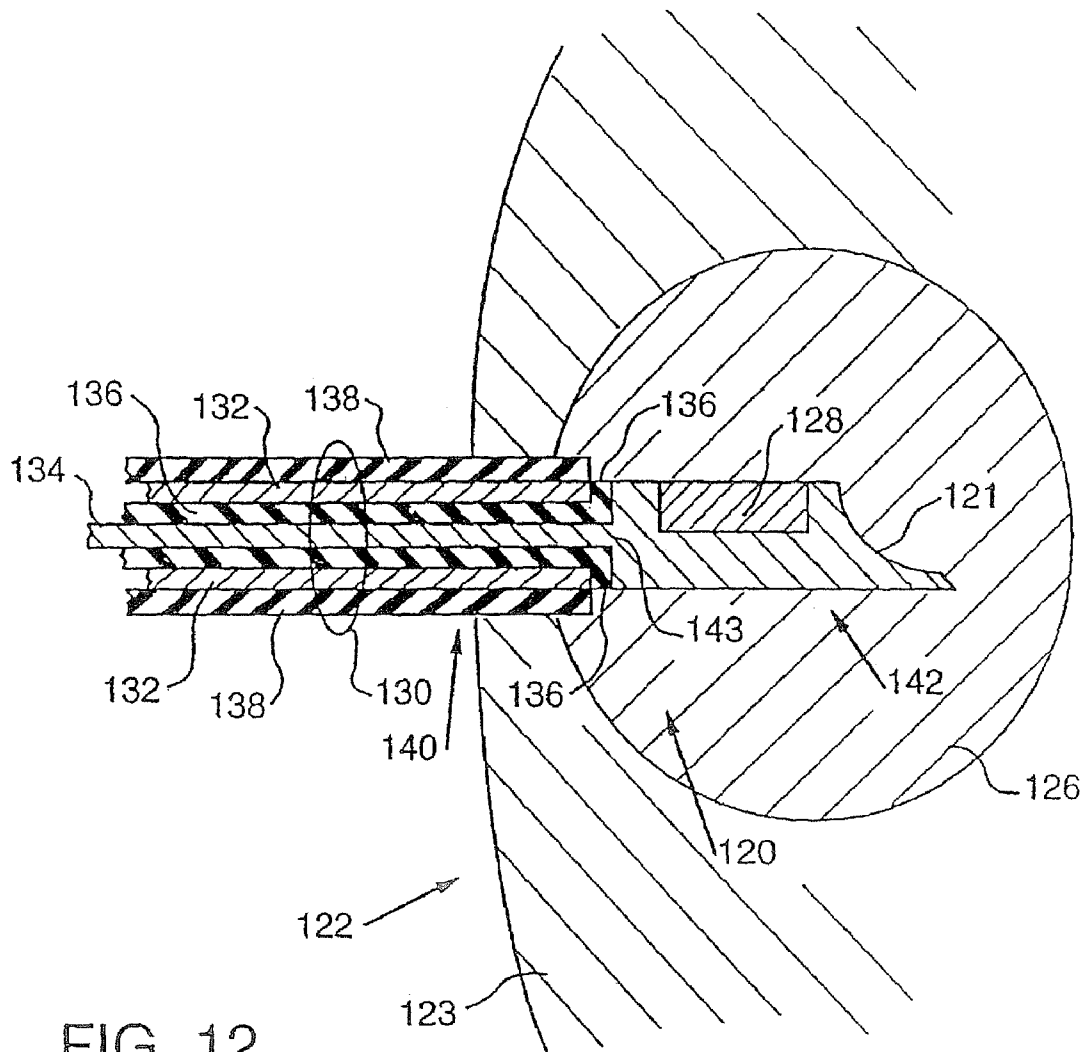


FIG. 12

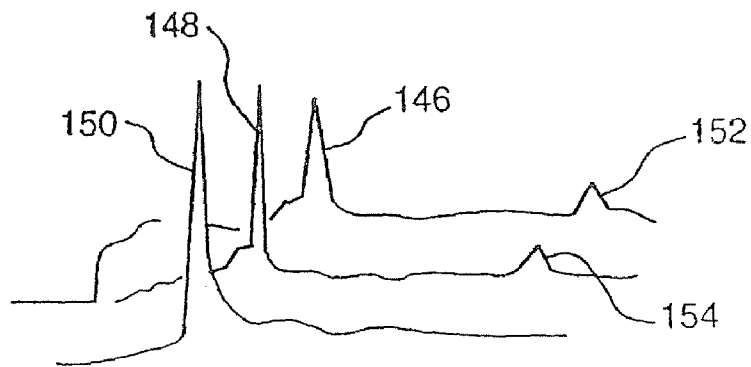


FIG. 13

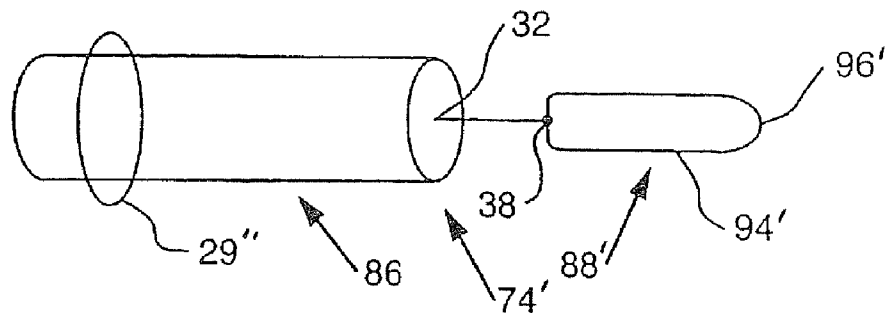


FIG. 14

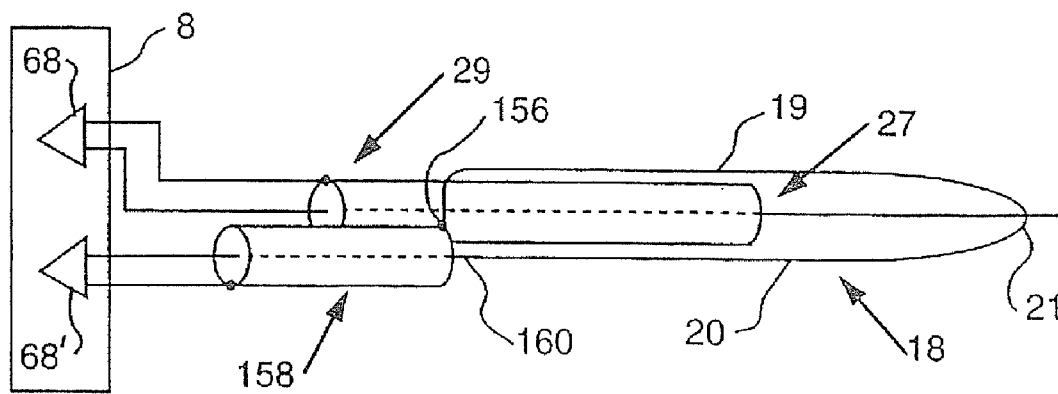


FIG. 15

FIG. 16

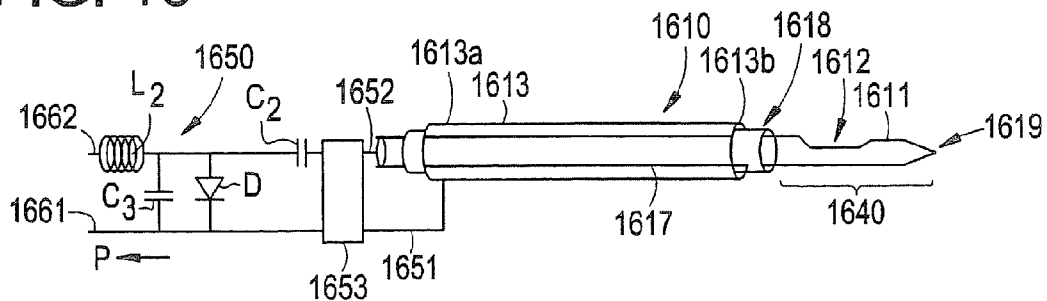


FIG. 17

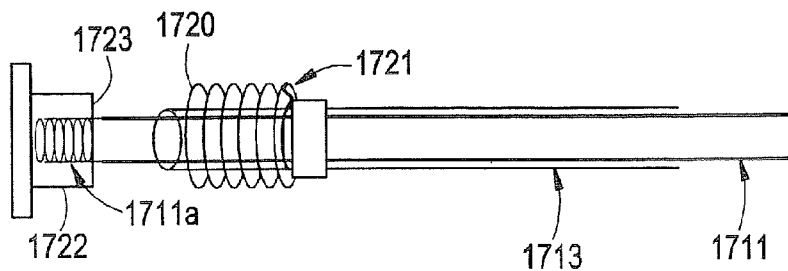


FIG. 18

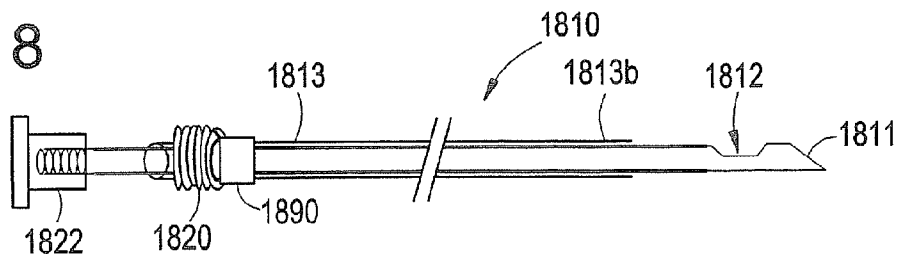


FIG. 19

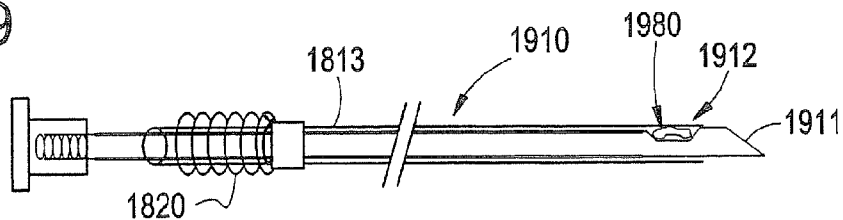


FIG. 20

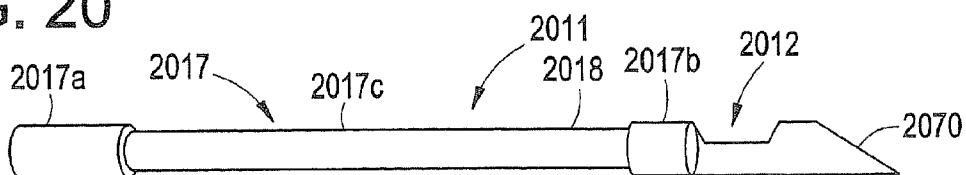


FIG. 21

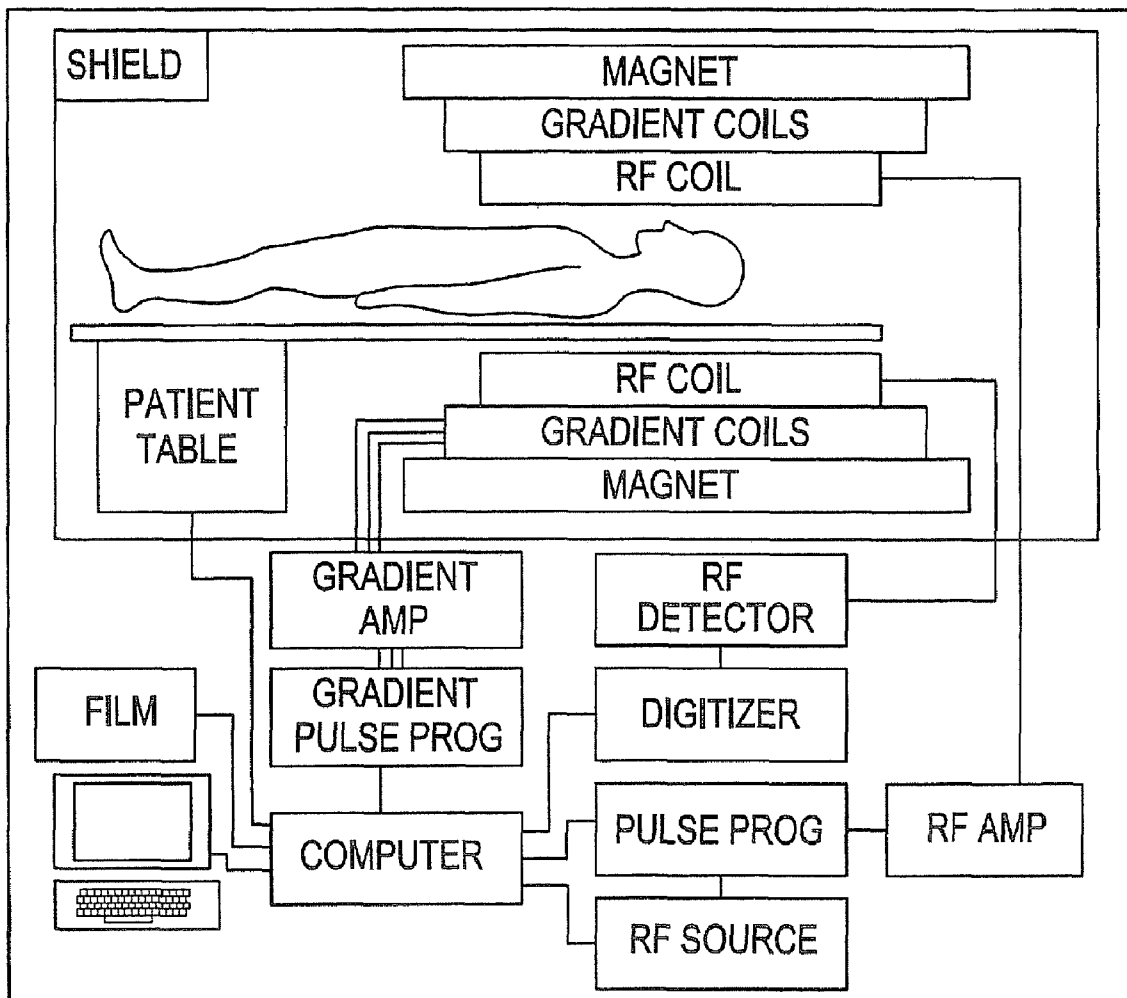


FIG. 22A

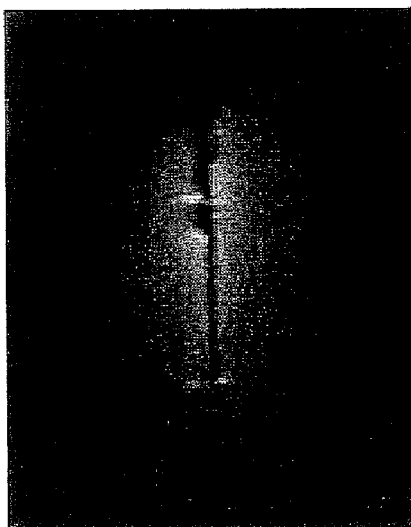


FIG. 22B

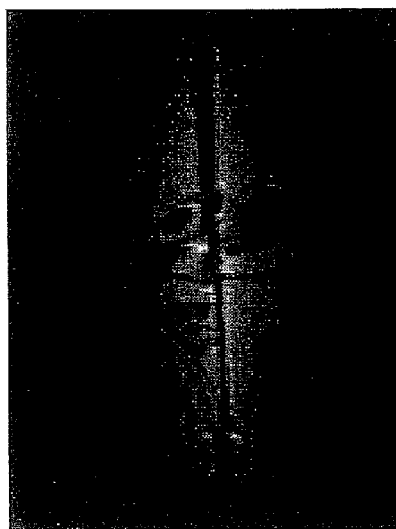


FIG. 23A



FIG. 23B

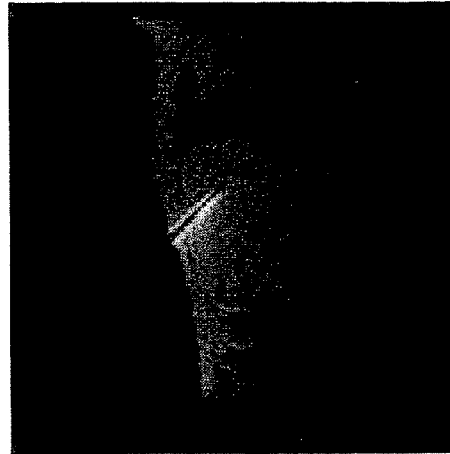


FIG. 23C

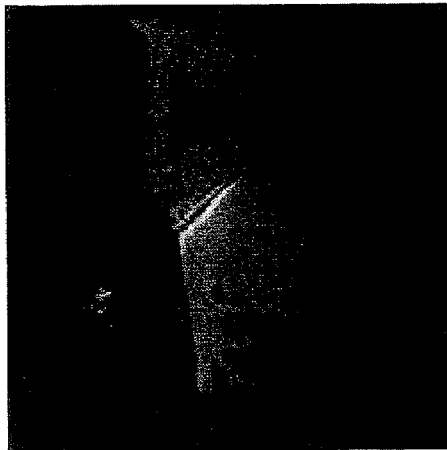


FIG. 23D

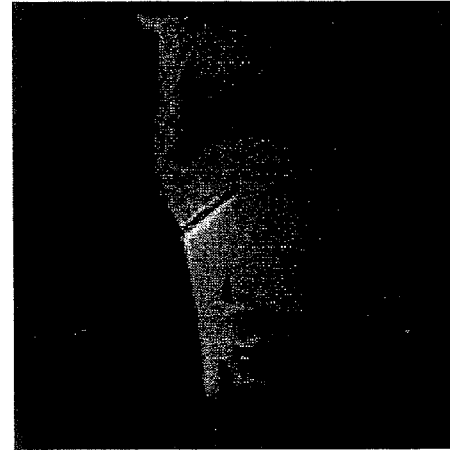


FIG. 23E

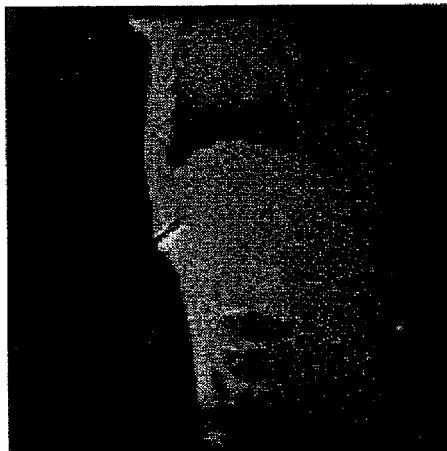
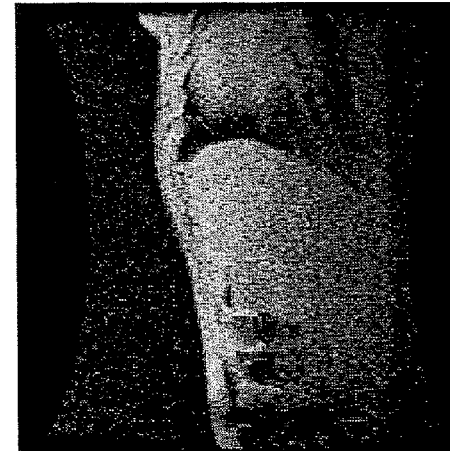


FIG. 23F



BIOPSY AND SAMPLING NEEDLE ANTENNAS FOR MAGNETIC RESONANCE IMAGING-GUIDED BIOPSIES

This application is a divisional of U.S. patent application Ser. No. 10/131,601, filed Apr. 24, 2002, now U.S. Pat. No. 7,236,816, which is a continuation-in-part of U.S. patent application Ser. No. 09/360,144, filed Jul. 26, 1999, now abandoned, which is a continuation-in-part of U.S. patent application Ser. No. 08/638,934, filed Apr. 25, 1996, now U.S. Pat. No. 5,928,145.

This application also claims benefit of priority to U.S. Provisional Patent Application Ser. No. 60/286,271, filed Apr. 24, 2001, entitled "Biopsy Needle Antenna for MR Guided Biopsies." The aforementioned applications are incorporated herein in their entireties by this reference.

FIELD

The disclosed systems and methods relate to magnetic resonance imaging antennas, and in some embodiments to magnetic resonance imaging antennas adapted for use as biopsy or sample needles.

BACKGROUND

The advantageous use of magnetic resonance technology in providing safe, rapid images of a patient has long been known. It has also been known to employ magnetic resonance technology in producing chemical shift spectra to provide information regarding the chemical content of a material.

In a general sense, magnetic resonance imaging involves providing bursts of radio frequency energy on a specimen positioned within a main magnetic field in order to induce responsive emission of magnetic radiation from the hydrogen nuclei or other nuclei. The emitted signal may be detected in such a manner as to provide information as to the intensity of the response and the spatial origin of the nuclei emitting the responsive magnetic resonance signal. In general, imaging may be performed in a slice or plane, in multiple planes, or in a three-dimensional volume with information corresponding to the responsively emitted magnetic radiation being received by a computer which stores the information in the form of numbers corresponding to the intensity of the signal. The pixel value may be established in the computer by employing Fourier Transformation which converts the signal amplitude as a function of time to signal amplitude as a function of frequency. The signals may be stored in the computer and may be delivered with or without enhancement to a video screen display, such as a cathode-ray tube, for example, wherein the image created by the computer output will be presented through black and white presentations varying in intensity, or through color presentations varying in hue and intensity. See, generally, U.S. Pat. No. 4,766,381.

One of the beneficial end uses of the disclosed systems and methods is in connection with atherosclerotic disease which is a major cause of mortality and morbidity in the United States. Localized forms of the disease, such as the deposit of plaque on the walls of blood vessels, can restrict local blood flow and require surgical intervention in some instances. While angiography is an effective means for detecting the luminal narrowing caused by plaque, it does not provide information regarding the nature of the process leading to blood flow reduction. Unfortunately, therapeutic methods, such as intravascular intervention, may experience failure due to the lack of sufficiently precise imaging methods. An imaging system capable of providing detailed, qualitative and

quantitative data regarding the status of vascular walls at the time of surgical intervention, could favorably influence the outcome by enabling the selection of the intervention method to be customized to the particular need. It would also serve to provide precise guidance for various forms of localized therapy.

It has been known to use angioplasty and intravascular ultrasound for imaging plaques. See, generally, Spears et al., "In Vivo Coronary Angioscopy," *Journal of the American College of Cardiology*, Vol. 1, pp. 1311-14 (1983); and Waller et al., "Intravascular Ultrasound: A Histological Study of Vessel During Life," *Circulation*, Vol. 85, pp. 2305-10 (1992). Intravascular ultrasound, however, provides several drawbacks, including the insensitivity to soft tissue and the inability to reliably detect thrombus and discriminate thrombus (new or organized) superimposed upon plaque from soft lipid-laden plaques. Also, the presence of artifacts related to transducer angle relative to the vessel wall, and an imaging plane limited to the aperture of the transducer in variable resolution at different depths of view are further problems with this approach.

The feasibility of identification of atherosclerotic lesions by employing magnetic resonance (MR) microimaging in vitro has previously been suggested. See, for example, Pearlman et al., "Nuclear Magnetic Resonance Microscopy of Atheroma in Human Coronary Arteries," *Angiology*, Vol. 42, pp. 726-33 (1991); Asdente et al., "Evaluation of Atherosclerotic Lesions Using NMR Microimaging," *Atherosclerosis*, Vol. 80, pp. 243-53 (1990); and Merickel et al., "Identification and 3-d Quantification of Atherosclerosis Using Magnetic Resonance Imaging," *Comput Biol. Med.*, Vol. 18, pp. 89-102 (1988).

It has also been suggested that MRI can be used for quantification of atherosclerosis. See, generally, Merickel et al., "Noninvasive Quantitative Evaluation of Atherosclerosis Using MRI and Image Analysis," *Arteriosclerosis and Thrombosis*, Vol. 13, pp. 11 80-86 (1993).

Yuan et al., "Techniques for High-Resolution MR Imaging of Atherosclerotic Plaques," *J. Magnetic Resonance Imaging*, Vol. 4, pp. 43-49 (1994) discloses a fast spin echo MR imaging technique to image atherosclerotic plaques on an isolated vessel that has been removed by carotid endarterectomy. As the signal-to-noise ratio (SNR) decreases with the decrease in imaging time and increase in resolution, special radio frequency (RF) receiver coils were designed. The article suggests that by the use of special MR hardware at 1.5 T using various T1 and T2-weighted pulse sequences, it is possible to discriminate foam cells, fibrous plaque organized thrombus, new thrombus, loose necrosis and calcium.

It has also been suggested that the fat content of atherosclerotic plaque in excised tissue samples can be determined using chemical shift imaging or chemical shift spectroscopy. See, generally, Vinitski et al., "Magnetic Resonance Chemical Shift Imaging and Spectroscopy of Atherosclerotic Plaque," *Investigative Radiology*, Vol. 26, pp. 703-14 (1991); Maynor et al., "Chemical Shift Imaging of Atherosclerosis at 7.0 Tesla," *Investigative Radiology*, Vol. 24, pp. 52-60 (1989); and Mohiaddin et al., "Chemical Shift Magnetic Resonance Imaging of Human Atheroma," *Br. Heart J.*, Vol. 62, pp. 81-89 (1989).

The foregoing prior art articles in the aggregate could lead one skilled in the art to conclude that MR, while having potential for fully characterizing vessel wall disease, suffers from low anatomic resolution unless used in vitro on small specimens with high resolution methods.

It is known that in order to obtain the desired high-resolution imaging and spectroscopy of arteriosclerotic plaques, a coil can be placed close to the target blood vessel.

In Kantor et al., "In vivo ^{31}P Nuclear Magnetic Resonance Measurements in Canine Heart Using a Catheter-Coil," *Circulation Research*, Vol. 55, pp. 261-66 (August 1984), there is disclosed an effort to improve the SNR in the ^{31}P spectroscopy of a dog myocardium using an elliptical coil. This coil is rigid, rather bulky, and designed for spectroscopy of the myocardium, but is not ideal for vessels.

Disclosures of efforts to develop catheter coils for imaging vessel walls are contained in Martin et al., "MR Imaging of Blood Vessel with an Intravascular Coil," *J. Magn. Reson. Imaging*, Vol. 2, pp. 421-29 (1992); and Hurst et al., "Intravascular (Catheter) NMR Receiver Probe: Preliminary Design Analysis and Application to Canine Iliofemoral Imaging," *Magn. Reson. Med.*, Vol. 24, pp. 343-57 (April 1992). These disclosures employ two tiny diameter, back-to-back solenoid coils to produce a good axial profile when the coils are placed along the main magnetic field.

Martin et al., "Intravascular MR Imaging in a Porcine Animal Model," *Magn. Reson. Med.*, Vol. 32, pp. 224-29 (August 1994) discloses use of the system disclosed in the above-cited Martin et al. article for high-resolution images of live animals. See, also, Abstract, McDonald et al., "Performance Comparison of Several Coil Geometries for Use in Catheters," RSNA 79th Scientific Meeting, *Radiology*, Vol. 189(P), p. 319 (November 1993). A strong disadvantage of these disclosures is that multislice acquisition cannot be carried out because the longitudinal coverage of the sensitive regions is limited to a few millimeters. Furthermore, the coil itself does not have the desired flexibility while maintaining the desired efficiency of data acquisition.

U.S. Pat. No. 5,170,789 discloses a nuclear magnetic resonance (NMR) coil probe, in the form of a loop, that is said to be insertable within a specimen, which has an opening, for purposes of nuclear magnetic resonance spectroscopy (NMRS). The disclosed two component probe, which is in the nature of an endoscope to examine the colon or cervix, has a first portion which is insertable into a body cavity and a second portion which is external to such cavity. The probe has a flexible coil body with an oval or circular shape that may deform during insertion. As a result, the coil may require tuning after insertion. If the coil were made of a very rigid material, insertion problems may occur. Also, a tuning and matching circuit, in the external portion, may limit the depth of insertion.

U.S. Pat. No. 4,932,411 discloses a probe with a transmit/receive coil for insertion in channels which are surgically or otherwise inserted in body organs, such as the brain, liver or kidneys. The coil, which is in the form of a loop, is carried and wound on the distal end of a carrier which is used to insert the coil into the body channel.

U.S. Pat. No. 4,672,972 discloses an NMR probe disposed at the distal end of a catheter or endoscope for obtaining NMR spectra from within a patient. The multi-turn probe has a parametric amplifier and/or a gate-array attached to it and, also, has a coil cooling system.

U.S. Pat. No. 5,413,104 discloses an invasive MRI transducer having a balloon, at least one lumen, and a flexible coil loop for insertion in a body cavity.

It has been known to employ an MR-active invasive device with RF transmitter coils for selective MR angiography of blood vessels. See, generally, U.S. Pat. No. 5,447,156.

It has also been known to employ an intravascular catheter with a Faraday screen to prevent RF electric-field interactions

with the sample, such as blood, which cause the coil to detune. See, generally, U.S. Pat. No. 5,419,325.

MR compatibility characteristics of various catheter and guide wire systems, for use in interventional MR procedures, has been considered. See Dumoulin et al., "Real-time Position Monitoring of Invasive Devices Using Magnetic Resonance," *Magnetic Resonance in Medicine*, Vol. 29, pp. 411-15 (March 1993); and Abstract, Koechli et al., "Catheters and Guide Wires for Use in an Echo-planar MR Fluoroscopy System," RSNA 79th Scientific Meeting, *Radiology*, Vol. 189 (P), p. 319 (November 1993).

McKinnon et al., "Towards Visible Guidewire Antennas for Interventional MRI," *Proc. Soc. Mag Res.*, Vol. 1, p. 429 (August 1994) discloses antenna designs which are asserted to make guidewires, biopsy or sample needles and other vascular interventional devices visible by MRI. One MRI stub antenna is a length of coaxial cable with 10 cm of the braid removed from the end. One end of the coaxial cable is directly connected to the surface coil input of an MRI scanner and the other end is placed in a water filled phantom. The MR image is a bright line corresponding to spins in the immediate neighborhood of the cable. A preferred MRI stub antenna is an unterminated twisted pair cable having a diameter of 0.2 or 1 mm, and a corresponding image line width of 1 or 3 mm, respectively, which provides a finer image than the coaxial cable stub antenna. A preferred combination is a steerable guidewire containing a twisted pair cable. It is suggested that a surface coil could be used simultaneously with a guidewire antenna by combining, as with phased array coils, the specimen image from the surface coil with the image of the stub antenna using the data acquired from the stub antenna, to localize the in vivo device during interventional MRI.

It has been known to employ an invasive device having an RF coil for transmitting RF signals which are detected by external RF receive coils to track the invasive device. See, generally, U.S. Pat. No. 5,437,277.

It has also been known to employ external RF transmitter/receiver coils. See, generally, U.S. Pat. No. 5,447,156.

U.S. Pat. No. 5,323,778 discloses a probe for insertion in an artery or other body passageway. The probe has an MRI coil, an external MRI RF source and an RF heating apparatus for hyperthermia therapy.

Japanese Kokai Patent Application No. Hei 6[1994]-70902 to Koshiichi (hereinafter "Koshiichi") discloses two forms of dipole antenna. The first form has four wires and three ends. Two input leads are provided and two conducting poles form the dipole. One pole is inserted into a body cavity while the other is outside the body. The length of the inserted pole is about 1.2 meters at the field strength of 1.5 T common to many whole-body MRI systems today, resulting in a total antenna dipole length of about 2.4 meters. This three-ended dipole is impractical and/or has major practical disadvantages because i) the pole length is too long for applications to body cavities, blood vessels, etc.; ii) the inserted pole is loaded by the body impedance to an extent which varies with the length inserted, resulting in the MRI resonant frequency and match impedance varying with the length of insertion; iii) the fact that one end is inserted and the other end is not results in imbalancing of the impedance of the dipole which could deleteriously affect safety and performance; iv) because the length of the poles is comparable to the input leads, the tuning of the MRI resonant frequency and the impedance matching of the coil will depend on the location, orientation, and bending of each pole relative to the other; v) because the pole length is so long (about 1.2 meters at 1.5 T) this MRI probe will perform poorly compared to preexisting MRI coils whose dimensions are smaller, rendering it a disadvantageous

probe design relative to pre-existing MRI probe technologies, including ones designed for use external to the body (such as solenoid “bird cage” MRI coils, surface coils, etc.); and vi) it is impractical to maintain an orientation of the dipole relative to the magnetic field when such coil is introduced into the convoluted and contorted passages of the body. For these reasons, the first dipole antenna design of Koshiichi has significant impediments for human applications.

Koshiichi further describes a second embodiment of his probe wherein one of the poles is folded back and incorporated into a sleeve. While this may partially overcome the problem of having a free end, the other problems discussed above with respect to his first embodiment remain. In particular, the 2.4 meter length is excessively long, has inferior performance with respect to existing MRI probes which do not allow insertion, and the end with the single pole will interact with the sleeved end containing the other pole and the input leads, making it impractical to tune.

U.S. Pat. No. 5,358,515 discloses a microwave hyperthermia applicator for limited heating of cancerous tissue including upper and lower dipole halves of the same diameter. The upper dipole half is a widened metal extension of the inner conductor of an insulated coaxial cable. The lower dipole half is a metal cylinder connected to the outer sheath of the coaxial cable. A $\pi/2$ ($\lambda/4$) transformer, such as the outermost metal cylindrical sheath of a triaxial cable, is separated at its upper end from the lower dipole half which is connected to the coaxial cable outer sheath. The transformer is filled with a dielectric medium and is connected at its lower end to such coaxial cable outer sheath. When the antenna is inserted in a dissipative medium and supplied with microwave energy through the coaxial cable, only that area of the medium immediately around the antenna is heated.

MRI has many desirable properties for the diagnosis and therapy of atherosclerotic disease. For example, it is possible to see lesions directly, even before the plaques calcify. However, the SNR of MR images obtained from conventional surface or body coils is insufficient. This is because the coils placed outside the body pick up noise from a very large region of the body. To achieve satisfactory quality, the signal receiver can be placed as close as possible to the tissue of interest (e.g., blood vessels). A coil placed on the tip of a catheter and inserted into the blood vessels could be a solution; but, the real part of the impedance of a catheter coil is relatively small and, hence, a tuning and matching circuit is preferably located immediately after the coil within the blood vessels. It is believed that prior art designs that do otherwise suffer from a significant SNR loss. On the other hand, it is believed that prior art designs, which have a tuning and matching circuit immediately after the coil in blood vessels, are too thick to be placed into small vessels.

There remains, therefore, a very real and substantial need for an improved apparatus and method for MR imaging and spectroscopic analysis of specimens in a manner which provides efficient data acquisition with maximum SNR while permitting in vivo or in vitro acquisition from small vessels and a wide range of other types of specimens.

SUMMARY

As used herein, the term “specimen” shall refer to any object other than a loopless antenna placed in the main magnetic field for imaging or spectroscopic analysis and shall expressly include, but not be limited to members of the animal kingdom, including humans; test specimens, such as biological tissue, for example, removed from such members of the animal kingdom; and inanimate objects or phantoms which

may be imaged by magnetic resonance techniques, or which contain water or sources of other sensitive nuclei.

As used herein, the term “loopless antenna” shall expressly include, but not be limited to a dipole antenna and any and all equivalents thereof, such as, for example, a dipole antenna having two poles at least one of which includes a mechanical loop (see, e.g., FIG. 14).

As used herein, the term “patient” shall mean human beings and other members of the animal kingdom.

As used herein, the term “composite image” shall mean a magnetic resonance image that is formed from magnetic resonance data obtained by a magnetic resonance antenna and a magnetic resonance scanner, body coil, or surface coil. The data from the magnetic resonance antenna and the magnetic resonance scanner, body coil, or surface coil may be obtained simultaneously or substantially simultaneously. An image formed by a biopsy or sampling needle antenna can preferably be a high resolution image, such as one millimeter resolution, submillimeter resolution, 300 micron resolution, 100 micron resolution, or 10 micron resolution.

In an embodiment, a biopsy or sample needle antenna includes a magnetic resonance imaging antenna, having an outer shield, and an inner conductor electrically insulated from the outer shield by a dielectric; and a biopsy or sample needle electrically connected to the inner conductor and electrically insulated from the outer shield by the dielectric.

In an embodiment, a biopsy needle antenna may include a cannula being formed at least in part of a conductive material, an obturator being formed at least in part of a conductive material, the obturator being slideably displaceable relative to the cannula, an insulator electrically insulating the cannula from the obturator, and a connector that can couple the cannula and the obturator to a magnetic resonance interface circuit.

In an embodiment, a sampling needle antenna may include a cannula being formed at least in part of a conductive material, an obturator being formed at least in part of a conductive material, the obturator being slideably displaceable relative to the cannula, and an insulator electrically insulating the cannula from the obturator, wherein the outer shield, the inner conductor, and the insulator form a magnetic resonance imaging antenna.

In an embodiment, a method of obtaining a sample with magnetic resonance imaging guidance can include providing a sampling needle magnetic resonance imaging antenna, advancing the antenna to a structure from which the sample is to be taken, detecting magnetic resonance data by the antenna, and coupling the sample to the antenna. In an embodiment, a sample can be a biopsy.

In an embodiment, a biopsy or sample needle antenna can include a cannula being formed at least in part of a conductive material, an obturator being formed at least in part of a conductive material, the obturator being slideably displaceable within the cannula, and an insulator electrically insulating the cannula from the obturator, wherein the outer shield, the inner conductor, and the insulator form a magnetic resonance imaging antenna.

In an embodiment, a magnetic resonance imaging antenna can include an inner conductor, an outer shield slideably displaceable with respect to the inner conductor, and an insulator electrically insulating the inner conductor from the outer shield.

In an embodiment, a method of obtaining a magnetic resonance imaging-guided biopsy can include providing a biopsy or sample needle magnetic resonance imaging antenna, advancing the antenna to a structure from which the biopsy is

to be taken, detecting magnetic resonance data by the antenna, coupling the biopsy to the antenna.

In an embodiment, a method of obtaining a magnetic resonance imaging-guided biopsy can include providing a biopsy or sample needle antenna, having a magnetic resonance imaging antenna, including an outer shield, and an inner conductor electrically insulated from the outer shield by a dielectric, and a biopsy or sample needle electrically connected to the inner conductor and electrically insulated from the outer shield by the dielectric; advancing the needle to a lesion, imaging the lesion with the antenna, and taking a sample of the lesion with the needle.

An embodiment may further comprise a sheath, the biopsy or sample needle being slideably displaceable within the sheath. In an embodiment, the sheath can be defined by the outer shield.

In an embodiment, at least one of the outer shield, the inner conductor, and the biopsy or sample needle can include at least one of a magnetic resonance compatible material, gold, silver, copper, aluminum, gold-silver, gold-copper, silver-copper, platinum, and platinum-copper.

In an embodiment, the outer shield and the inner conductor can form a coaxial cable. In an embodiment, the coaxial cable may be electrically interconnected to an impedance matching circuit.

In an embodiment, at least one of the outer shield, the inner conductor, and the biopsy or sample needle can include at least one of a superelastic material, platinum, iridium, MP35N, tantalum, Nitinol, L605, gold-platinum-iridium, gold-copper-iridium, titanium, and gold-platinum.

In an embodiment, the outer shield can be slideably displaceable with respect to the inner conductor. In an embodiment, the inner conductor can include an obturator and the outer shield comprises a cannula slideably displaceable over the obturator. In an embodiment, the obturator can further include a side-slit. In an embodiment, the cannula can include a distal end having a cutting edge, the cutting edge slideably displaceable over the side-slit. In an embodiment, the cannula can cover at least the side-slit.

In an embodiment, the cannula can be spring-loaded. In an embodiment, at least a portion of the obturator can protrude from a distal end of the cannula. An embodiment can further include a spring coupled to the outer shield. In an embodiment, the spring can be electrically coupled to the outer shield.

In an embodiment, the dielectric can include at least one of fluoroethylene polymer, tetrafluoroethylene, polyester, polyethylene, silicone, metal oxide, glass, and polyethylene terephthalate. In an embodiment, the dielectric can be covered by a lubricious coating. In an embodiment, the lubricious coating can include at least one of polyvinylpyrrolidone, polyacrylic acid, and silicone.

In an embodiment, the inner conductor and outer shield can be electrically coupled to an interface. In an embodiment, the interface can include at least one of a tuning-matching circuit, a balun circuit, a decoupling circuit, and a variable capacitor. In an embodiment, the interface can couple to an MRI scanner.

In an embodiment, the biopsy or sample needle antenna can receive magnetic resonance spectroscopy information from a sample. Magnetic resonance spectroscopy information can include, e.g., information from magnetic nuclei, such as hydrogen, phosphorus, sodium, and other known in the art. When a one-dimensional MR Spectroscopy technique along the length of the antenna is utilized, very high resolution spectroscopy of the tissue around the needle can be obtained. The antenna signal reception characteristics can facilitate

localization, particularly in the radial direction. One use of a biopsy device disclosed herein is accurate localization of malignant tumors by using MR spectroscopy. It is known that at least some biopsy techniques have very high specificity but low sensitivity. On the other hand, some tumors may not be visible by hydrogen (proton) MRI, however proton or other nuclei, (such as Na, P, Ca etc) spectroscopy information may reveal signal that can differentiate the malignant tumor from the normal and the benign tumor. With the aid of the MR spectroscopy guidance, sensitivity of the biopsy procedure can be increased by placing the needle in the tumor with suspected malignancy.

In an embodiment, the antenna can include a cannula including an outer shield, an obturator including an inner conductor, the obturator slideably displaceable relative to the cannula, and an insulator electrically insulating the outer shield from the inner conductor.

In an embodiment, coupling can include trapping the biopsy between the cannula and the obturator. In an embodiment, trapping can include moving at least one of the cannula and the obturator relative to the other. An embodiment can further include coupling the magnetic resonance data to an MRI scanner to form a magnetic resonance image.

An embodiment provides a device that can be used as a biopsy or sample needle in MR-guided core biopsy procedures, as well as function as an MR antenna for accurate needle positioning and high-resolution imaging of the target. Such a device may have application in a number of MRI-guided diagnostic procedures to evaluate pathologic lesions including cancers, to assess the health of various organs in the body, and to provide information useful for assessing therapeutic response.

Systems and methods are disclosed to enhance and facilitate the performance of biopsy procedures with MRI.

In an embodiment, a biopsy device is MRI compatible.

In an embodiment, a biopsy device can be easily visualized and/or tracked by MRI.

An embodiment can facilitate high resolution imaging of a target area.

In an embodiment, a biopsy device permits sampling and collection of tissues and/or fluids under MRI guidance.

An embodiment provides an image-guided biopsy that obviates the need for biopsy needles that can generate visible artifacts for needle localization.

An embodiment provides a method to perform MRI-guided biopsy procedures.

An embodiment provides a system to perform MRI-guided biopsy procedures.

An embodiment provides for an MRI-compatible device that includes a biopsy needle, means for sampling and collection of tissue and fluid samples, and an antenna for receiving MRI signals. High resolution imaging of target lesions and tissues is rendered by virtue of the close proximity of the MRI antenna to the tissue of interest.

In an embodiment, an image may be a composite image.

An embodiment provides a device with an insulated movable obturator, which has a cutting edge that slices the tissue on the slide-slit portion and thus performs the biopsy procedure, collecting the tissue samples. The obturator also forms the inner conductor of a loopless antenna type detector (as described by Ocali and Atalar, cited above). In addition, the device is provided with a cannula, which, in conjunction with a mechanical spring assembly that is electrically connected to the cannula, effectively serves as the outer RF shield portion of the loopless antenna. The biopsy needle is charged, by drawing the plunger in the proximal direction. The MRI

antenna receiver function is preferably performed with the biopsy needle charged and the obturator is pushed into the cannula.

In an embodiment, the biopsy needle MRI detector device is connected to circuitry that provides for decoupling of the antenna during MRI excitation, and for matching and tuning of the MRI antenna in order to enhance and maximize MRI performance. It also functions to connect the needle to an MRI scanner.

In an embodiment, a MRI-compatible biopsy needle device with MRI receiving antenna is combined with matching tuning and decoupling circuitry and an MRI scanner to guide, perform, and provide visualization of biopsy procedures.

An embodiment provides a method of performing an image-guided biopsy employing the MRI-compatible biopsy needle device with MRI receiving antenna, matching tuning and decoupling circuitry, in conjunction with an MRI scanner. The method provides for accurate needle positioning and high resolution imaging of target pathologic lesions and nearby tissues, thereby enabling avoidance of injury to critical areas as the device is introduced, and providing improved tissue characterization and morphologic information about suspected lesions and pathologies. This will facilitate potential medical interventions such as surgical planning, increase the accuracy of the biopsy procedure, and avoid unnecessary repeated biopsies.

An embodiment provides an MRI-compatible biopsy needle modified to form a loopless MRI antenna. The needle has a moveable cannula with a cutting edge that provides sample collection for subsequent removal and histological analysis. The needle device is interfaced to decoupling, matching and tuning circuit and connected to the receiver input of an MRI scanner, to permit images to be created from the MRI signals thereby detected. The images are used to guide the introduction and ingress of the biopsy needle into a subject positioned in the MRI scanner, for the purpose of providing accurate targeting of the biopsy site, and detailed imaging of the surrounding local anatomy for assessment.

In an embodiment, a method of MRI imaging includes positioning a specimen within a main magnetic field, introducing an antenna in close proximity to the specimen, employing as the antenna a loopless antenna, imposing the main magnetic field on a region of interest of the specimen, applying radio frequency pulses to the region of interest to excite magnetic resonance signals within the specimen, applying gradient magnetic pulses to the region of interest to spatially encode the magnetic resonance signals with the antenna receiving the magnetic resonance signals and emitting responsive output signals, employing processing means for receiving and processing the responsive output signals and converting them into magnetic resonance information, and employing display means for receiving the magnetic resonance information from the processing means and displaying the same as an image or as chemical shift spectra.

The antenna employed in one preferred embodiment has the loopless antenna and a coaxial cable means structured to be received within the intravascular system, the pancreatic duct, or a tortuous passageway of a patient.

The antenna employed in another preferred embodiment is a loopless antenna structured as a biopsy needle.

The antenna employed in another preferred embodiment has a balancing transformer means operatively associated with a portion of the outer shield of a coaxial cable. For applications within a blood vessel, an insulator in the balanc-

ing transformer is preferably employed with a dielectric constant about equal to a dielectric constant of blood in the blood vessel.

The antenna employed in another preferred embodiment has an impedance matching circuit electrically interposed between the loopless antenna and the processing means to enhance radio frequency power transfer and magnetic resonance signal-to-noise ratio from the loopless antenna to the processing means.

The antenna for most embodiments is preferably flexible so as to permit efficient movement through specimen passageways and other specimens or samples to be analyzed regardless of whether the path is straight or not.

The antenna may be employed in chemical shift imaging through acquisition of spatially localized chemical shift information.

In this manner, the method enables both imaging and chemical shift analysis which may also be advantageously employed substantially simultaneously with surgical intervention.

A dipole antenna portion of the loopless antenna may be on the order of about 3 cm to about 20 cm in length, and may have a relatively small maximum outer diameter of about 0.3 mm to about 1.0 cm.

In one embodiment, the antenna also functions as a transmitting antenna to provide the RF signals and, thereby, provide enhanced efficiency of operation for certain uses.

The method may also employ additional elements, such as a balancing transformer and/or an impedance matching circuit in order to provide enhanced operation.

A corresponding magnetic resonance analysis apparatus is provided.

A corresponding magnetic resonance antenna assembly includes an antenna having loopless antenna means at least for receiving magnetic resonance signals emitted from a specimen and emitting responsive output signals.

Disclosed systems and methods can facilitate providing high-resolution and spectroscopic imaging of the interior of specimens, including in vivo and in vitro imaging of patients and patient derived specimens or samples.

Disclosed systems and methods can facilitate rapid imaging of walls of small, tortuous blood vessels with high-resolution, as well as other specimens, and will permit the use of multislice data acquisition techniques.

Disclosed systems and methods can facilitate acquiring images simultaneously with surgical procedures such as removing plaque from blood vessels.

An embodiment includes a loopless, flexible antenna that can provide both qualitative and quantitative data and to facilitate use of the same substantially simultaneously with medical intervention to correct undesired conditions.

An embodiment facilitates acquiring morphological information about soft tissue and plaque.

An embodiment facilitates acquiring chemical information about soft tissue and plaque.

In an embodiment, the antenna may function only as a receiver antenna or may function as an antenna for both excitation and detection of MR signals.

In an embodiment, the antenna may function as an invasive probe, such as a catheter.

In an embodiment, the antenna may function as a probe-type medical device such as a biopsy needle.

In an embodiment, no tuning or impedance matching circuit is generally required.

In an embodiment, no tuning of the antenna is generally required after such antenna is inserted in a patient.

An embodiment can include or couple to an impedance matching circuit which may be employed with conventional hardware.

BRIEF DESCRIPTION OF THE FIGURES

FIG. 1 is a schematic illustration of a magnetic resonance analysis system.

FIG. 2 is a form of a catheter coil for the system of FIG. 1.

FIG. 3 is a schematic of a loopless antenna and an impedance matching circuit for the system of FIG. 1.

FIG. 4 is a cross-sectional view of a loopless balanced antenna.

FIGS. 5A-5B are plots of noise resistance with respect to antenna length for a loopless antenna similar to the embodiment of FIG. 4.

FIG. 6 is a schematic illustration of the loopless antenna of FIG. 4, an impedance matching and decoupling circuit, and a preamplifier.

FIG. 7 is a schematic illustration of the loopless antenna of FIG. 4, a matching circuit, two coaxial cables, and a transceiver.

FIG. 8 is a cross-sectional view of a loopless antenna and coaxial cable positioned in a blood vessel.

FIG. 9 is a cross-sectional view of a human pancreas with a catheter loopless antenna positioned in the pancreatic duct.

FIG. 10 is a log-log plot of measured and theoretical signal-to-noise ratio with respect to radial distance from the loopless antenna of FIG. 4.

FIG. 11 is a contour plot of theoretical SNR as calculated for a balanced loopless antenna.

FIG. 12 is a schematic cross-sectional illustration showing a loopless antenna employed as a biopsy needle.

FIG. 13 is a representation of the spectra of three adjacent voxels along the length of the catheter coil of FIG. 2.

FIG. 14 is a cross-sectional view of another embodiment of a dipole antenna.

FIG. 15 is a schematic illustration of a loopless antenna employed in combination with a catheter coil.

FIG. 16 shows a schematic diagram of a needle antenna and decoupling matching and tuning circuitry.

FIG. 17 shows a schematic diagram of the electrical connections to the proximal end of the biopsy-needle-antenna.

FIGS. 18 and 19 depict two exemplary positions that a biopsy needle can adopt.

FIG. 20 shows a diagram of an obturator of a biopsy needle antenna.

FIG. 21 shows a block diagram illustrating the operation of an MRI scanner system.

FIGS. 22A and 22B show images acquired with a biopsy needle antenna.

FIGS. 23A-F depict a sequence of images from an image-guided biopsy procedure.

DESCRIPTION

MRI-guided biopsies performed with non-magnetic devices using free-hand or stereotaxy techniques have been reported (see for example, S. G. Silverman et al., *Radiology*, 197:175-181, 1995; J. S. Lewin et al., *AJR Am J Roentgenol* 166:1337-1345, 1996). These procedures also use artifacts generated by the needle for localization, and typically require the use of external MRI detection coils to determine the needle position and the target. Other needle designs, either coated or not coated with MRI detectable substances and manufactured from non-magnetic materials and appropriately protected from induced heating, can avoid MRI arti-

facts. However, even though such devices are MRI-compatible, because they are not deployed as MRI antennas themselves, they cannot contribute to MRI performance nor enable high-resolution MRI of the target area.

MRI signals are weak and the ability of an antenna to detect them depends on both the antenna size and its proximity to the source of those signals. Thus, in order to improve the MRI signal, an MRI antenna may be placed near or inside the subject to be imaged. Such improvements can enable valuable increases in resolution sensitivity of a target area, reduction in scan time, and provide evidence of the MRI antenna itself on the MRI. For example, long, flexible loop antennas produce local regions of high signal permitting high resolution MRI in their vicinity when implemented as an internal MRI antenna, as shown for example by Atalar E, Bottomley P A, Ocali O, Correia L C, Kelemen M D, Lima J A, Zerhouni E A, "High resolution intravascular MRI and MRS by using a catheter receiver coil", *Magn Reson Med*. 1996;36:596-605. The loopless antenna design of Ocali O and Atalar E ("Intravascular magnetic resonance imaging using a loopless catheter antenna" in *Magn Reson Med*. 1997;37:112-8) may also be deployed as an internal MRI antenna to realize important resolution and sensitivity advantages.

By providing the ability both to visualize where on the image the antenna is located, and to provide high sensitivity and a high-resolution imaging capability an MRI scanner equipped with such detectors could be advantageous in medical procedures where MRI is used simultaneously to track the position of an interventional device, and to provide a way of evaluating the structures surrounding the device. In particular, by developing MRI-compatible needle biopsy and/or needle interventional devices that incorporate an MRI antenna capability, needle biopsies and/or interventions could be performed under MRI guidance with the following important advantages over X-ray and ultrasound-guided needle techniques: (1) full 3D anatomical visualization of the organ or tissue of interest during the examination; (2) an ability to image in any plane or orientation; (3) MRI has much greater sensitivity to soft tissue and pathology, enabling superior characterization of pathologic features of a target region; (4) the ability to obtain diverse functional information about the target organ or tissue via one or more of the many available state-of-the-art MRI techniques; (5) MRI involves zero exposure to potentially damaging x-ray radiation; and (6) because localization is determined by the super-position of magnetic fields to which the body is transparent to, and not by beams, there are no beam diffraction and reflection artifacts, nor (7) problems with opacity or imaging through bone etc.

FIG. 1 shows a schematic representation of the general concept of magnetic resonance analysis as employed with a specimen. An RF source 2 provides pulsed radio frequency energy to the specimen to excite MR signals therefrom. The specimen, in the form shown, is a patient 4 disposed in the main magnetic field which is created by a magnetic field generator 6. The generator 6 includes a magnetic field gradient generator for establishing gradients in the main magnetic field by applying gradient magnetic pulses on the region of interest of the patient 4 in order to spatially encode the MR signals.

The exemplary patient 4 is generally aligned with the main magnetic field and the RF pulses are emitted perpendicular thereto to one portion, several portions, or all of the specimen. Where oblique imaging is employed, the angle of impingement of the vector representing the spatial gradient of the magnetic field will be angularly offset from either the x, y, or z directions (not shown). This arrangement results in excitation of the nuclei within the area or volume to be imaged and

causes responsive emission of magnetic energy which is picked up by a receiver **8** having a loop antenna (i.e., a receiver coil) in close proximity to the patient **4**.

Preferably, the loop antenna of the receiver **8** is aligned with the z direction (i.e., the direction of the main magnetic field) in order to have maximum sensitivity. In the event the loop antenna is perpendicular to the main magnetic field, it has a practically zero sensitivity at certain locations. For oblique angles therebetween, the loop antenna has data acquisition capability, albeit with reduced sensitivity, thereby permitting data acquisition even at oblique angles.

The loop antenna or receiver coil of the receiver **8** has a voltage induced in it as a result of such responsive emissions of magnetic energy. As a practical matter, separate coils or identical coils may be employed by the RF source **2** and receiver **8**. The responsive output signal emerging from receiver **8** is amplified, phase-sensitive detected, and passes through analog-to-digital (A/D) converter **10** and enters a processor, such as computer **12**, which receives and processes the signals from the converter **10** and creates MR information related thereto. Within computer **12** the Fourier Transformations of signals convert the plot of amplitude versus time to a map of the distribution of frequencies by plotting amplitude versus frequency. The Fourier Transformations are performed in order to establish the intensity value locations of specific image pixels of the specimen and to obtain chemical shift spectra at those locations. These values may be stored, enhanced or otherwise processed, and emerge to be received and displayed as an image or as chemical shift spectra, as appropriate, on a suitable screen, such as a cathode-ray tube (CRT) **16**, for example.

In chemical shift spectra applications, for example, the magnetic field gradient generator of generator **6** generates the magnetic field gradient substantially parallel to the loop antenna of the receiver **8** over the region of interest in order to generate one-dimensional resolved chemical shift spectra which are spatially resolved substantially along the length of the loop antenna on the region of interest. The computer **12** converts spatially localized chemical shift information in the responsive output signals to chemical shift spectra, and employs the CRT **16** to receive and display such spectra. This facilitates one-dimensional chemical shift imaging in which the chemical shift information is spatially resolved in a direction substantially along the length of the loop antenna on the region of interest of the specimen.

Those skilled in the art will appreciate that the transmission properties of a coil may be used to analyze its reception properties. Referring to FIG. 2, in general, the signal voltage V_S of a coil **18** is determined in Equation 1:

$$V_S = \omega \mu \vec{H} \cdot \vec{M} \quad (\text{Eq. 1})$$

wherein ω is $2\pi F$, F is frequency of RF source **2**, μ is permeability constant, \vec{H} is magnetic field (vector) generated by coil **18** at unit input current I , and \vec{M} is sample magnetization (vector). Of the factors affecting the signal voltage V_S , H is the only coil-dependent parameter.

The RMS noise voltage V_N of the coil **18** is determined in Equation 2:

$$V_N = \sqrt{4k_B T R f} \quad (\text{Eq. 2})$$

wherein k_B is the Boltzman constant, T is sample temperature, R is real part of impedance seen from the terminals of coil **18**, $f = 2BW / (N_x N_y \text{NEX})$ is effective pixel bandwidth, BW is receiver bandwidth, N_x is number of pixels along the readout

direction, N_y is number of pixels along the phase encoding direction, and NEX is number of averages. The only coil-dependent parameter that affects the noise voltage V_N is R .

The signal-to-noise ratio (SNR) is determined in Equation 3:

$$\text{SNR} = \frac{V_S}{V_N} \propto \frac{H}{\sqrt{R}} \quad (\text{Eq. 3})$$

wherein, H is magnetic field (value) generated by coil **18** at unit input current I . To improve SNR, H should increase and R should decrease. For example, in coils, these are generally conflicting goals. A typical value of R for the coil **18** is about 0.5Ω .

In the structure of the conventional catheter coil **18**, magnetic fields generated by the two conductors **19,20** cancel partially. This cancellation effect becomes more pronounced as the distance of the specimen from the coil **18** increases. In this configuration, the path of the current I is completed by the end conductor **21**, which forms an electrical loop or coil with the conductors **19,20**. The performance of the coil **18** depends strongly on the separation distance d between the conductors **19, 20** and worsens (improves) as such separation distance (increases).

FIG. 3 illustrates an antenna **22**. The cancellation of the magnetic fields is avoided by separating the conductors **24, 26** as schematically shown in FIG. 3. The H field increases considerably by this operation. In this configuration, the path of the current I is not completed, and charges simply oscillate between the two tips of the antenna **22**. The H field generated by the antenna **22** becomes circular thereabout and is approximately inversely proportional with the distance thereto. The antenna **22** includes the conductors **24,26**, which form a loopless antenna **27'** having a dipole antenna portion **28'** and a connection portion **29'**; and, in this embodiment, an impedance matching circuit **30**. The impedance matching circuit **30** is electrically interposed between the loopless antenna **27'** and a preamplifier **68** of the receiver **8** of FIG. 1 and enhances RF power transfer and MR SNR from the antenna **27'** to the converter **10** of FIG. 1. The parameters of the impedance matching circuit **30** are chosen to resonate the antenna **27'** at the MR frequency of the nuclei of interest and to match the antenna **27'** to the optimum input impedance of the preamplifier **68**.

EXAMPLE 1

FIG. 4 is a cross-sectional view of an exemplary loopless balanced antenna **27**. A dipole antenna portion **28** receives MR signals emitted from a specimen responsive to pulsed RF signals and emits responsive output signals. A connection portion **29** emits the responsive output signals to the impedance matching circuit **30** of FIG. 3. In this embodiment, the connection portion **29** is a coaxial cable having an outer primary shield **31** and an inner conductor **32**. The coaxial cable **29** is electrically interposed between the dipole antenna portion **28** and the impedance matching circuit **30**.

The dipole antenna portion **28** has a first pole **33** and a second pole **34**. A portion **36** of the outer shield **31** is operatively associated with the first pole **33**. A portion **38** of the inner conductor **32** is operatively associated with the second pole **34**. The second pole **34** preferably includes a cylindrical conductor **40** electrically interconnected with the portion **38** of the inner conductor **32**.

The portion **36** of the outer shield **31** at the first pole **33** forms an inner primary shield **42** and an outer secondary shield **44**, each of which is coaxial with the inner conductor **32**. The first pole **33** includes the shields **42**, **44**. In this manner, the secondary shield **44** is also for receiving the MR signals.

The first pole **33** also includes a dielectric coating or insulator **46** under the outer secondary shield **44**, between such shield **44** and the inner primary shield **42**. The insulator **46** and the shields **42**, **44** form a balancing transformer operatively associated with the first pole **33**. The balancing transformer suitably disables current flow on the outer surface of the primary shield **31**, without significantly impeding current flow on the inner surface thereof.

Preferably, the insulator **46** is a relatively high dielectric constant (ϵ_r) insulator having a value of about 70 to about 100. Preferably, for optimal balancing, the dielectric constant of the insulator **46** is selected in order that the length $L/2$ (as shown in FIG. 3) of the transmission line formed by the primary shield **42** and the secondary shield **44** (as shown in FIG. 4) has a length of $\lambda/4$, where λ is the wavelength in the insulator **46** at the MR frequency of nuclei of interest. In this manner, the unbalanced current flowing on the outer surface of the primary shield **31** is greatly reduced.

For applications in vivo in a patient, the ϵ_r value of the insulator **46** is preferably selected to match the ϵ_r value of the surrounding medium **47** (e.g., the ϵ_r value of blood which ranges from about 70 to about 100). For other applications, the antenna **27** is preferably introduced in close proximity to the specimen. The insulator **46** may be made of any insulator having a suitable ϵ_r value and, preferably, is made of titanium oxide or a composite thereof.

Preferably, in terms of extending the sensitivity along the length of a loopless antenna, as discussed below in connection with FIG. 8, a balancing transformer is not employed. In the embodiment of FIG. 8, current flows on the outer surface of the primary shield **31** and the noise voltage is higher thereby providing a lower SNR. The primary shield **31** serves to receive the MR signal as well as the portion of the pole **86** which is adjacent the pole **88**. However, removing the balancing transformer reduces the SNR slightly.

The balancing transformer of FIG. 4 is preferably employed to avoid unbalanced currents which would otherwise make the input impedance Z_{IN} of FIG. 3 sensitive to changes in loading conditions and the position of the loopless antenna **27**.

The inner conductor **32** and the cylindrical conductor **40** may be made of a good non-magnetic, electrical conductor, such as copper, silver, or aluminum, for example. Because of the skin effect, however, wherein only about an 8 μm outer layer of the conductors **32**, **40** carries electrons at RF frequencies, a material plated with a good conductor will also function effectively. For example, silver plated copper, gold plated copper, or platinum plated copper may be employed.

The dipole antenna portion **28** of the exemplary balanced loopless antenna **27** has a length L of about 3 cm to about 20 cm, with larger (smaller) lengths obtained with smaller (larger) RF frequencies (e.g., less than about 400 MHz), although larger lengths of up to about 2 m are possible with the unbalanced loopless antenna **74** of FIG. 8. The length L facilitates multislice imaging without moving the loopless antenna **27**. Preferably, resiliently flexible loopless antennas **27**, **74** are provided. The optimal length of the antenna **27** at 1.5 T in human tissue is about 7 cm to about 10 cm. The exemplary balanced loopless antenna **27** has a maximum width W (FIG. 4) of about 0.5 mm to about 1.0 cm, although

smaller widths of about 0.3 mm are possible with the unbalanced loopless antenna **74** of FIG. 8.

The sensitivity profile of the exemplary antennas **27**, **74** depends on the respective antenna's orientation with respect to the main magnetic field. The best performance is achieved when the antennas **27**, **74** are aligned with the main magnetic field. In other words, in order to function effectively, the longitudinal axis **48** is parallel to the main magnetic field B (FIGS. 4 **20** and **8**) with the poles **33**, **34** along the length of the loopless antenna **27**. For example, for in vivo applications of the antennas **27**, **74**, the patient (and, hence, the antenna therein), may be moved to provide suitable alignment with the direction of the main magnetic field B .

The antennas **27**, **74** supply a relatively high signal voltage, since there are no magnetic field cancellations as in the coil **18** of FIG. 2. To estimate SNR performance, as shown in Equation 3, the noise resistance R (i.e., the real part of the impedance Z_{IN}) is necessary. The input impedance Z_{IN} of the antennas **27**, **74** may be measured experimentally (e.g., using a vector impedance meter in a saline solution which has conductivity similar to the particular specimen such as mammalian tissue). It is also possible to calculate the input impedance Z_{IN} by solving the associated electromagnetic problem. Both the real (R) and imaginary (jX) parts of the input impedance Z_{IN} are preferably employed in designing the impedance matching circuit **30** of FIG.

Preferably, for optimal SNR performance, the noise resistance R should be as small as possible. As shown in FIGS. 5A and 5B, noise resistance R (ohms) is plotted for changing antenna length (meters), for two different exemplary main magnetic field strengths, 4.7 Tesla (T) and 1.5 T, respectively, for a loopless antenna (not shown) similar to the loopless antenna **27** of FIG. 4. The loopless antenna represented by FIGS. 5A and 5B has a diameter of about 1.0 mm and a balancing transformer insulator with a dielectric constant (ϵ_r) representative of human body tissue. In both cases, R attains a shallow minimum (e.g., about 20 Ω to about 30 Ω). Preferably, the length of the loopless antenna is chosen around those minima.

The noise resistance R of the antenna **22** of FIG. 3 weakly depends on the radius of the conductors **24**, **26**. Compared to a typical 0.5 Ω input impedance of the conventional coil **18** of FIG. 2, the noise resistance R of the loopless antenna **27** of FIG. 4 approaches about two orders of magnitude larger and, hence, the noise voltage V_N approaches about one order of magnitude larger (as shown by the square root function of Equation 2). However, the signal voltage V_S of the loopless antenna **27** is also larger. The SNR performances of the coil **18** and the loopless antenna **27** equate at a distance of about 5-8 times the conductor separation distance d for the coil **18**. At smaller distances, the coil **18** is better, but for larger distances the loopless antenna **27** has a better SNR performance.

EXAMPLE 2

FIG. 6 is a schematic illustration of the loopless antenna **27** of FIG. 4, and a suitable exemplary impedance matching and decoupling circuit **50**, although the disclosed systems and methods are applicable to a wide variety of impedance matching circuits, and tuning and impedance matching circuits. The loopless antenna **27** is electrically interconnected to the circuit **50** by the coaxial cable **29**. The circuit **50** serves to match the impedance of the loopless antenna **27** with the characteristic impedance Z_0 of a coaxial cable **51**. The coaxial cable **51** is connected to the preamplifier **68** of the receiver **8** of FIG. 1 and carries the MR signal thereto. In this manner, the coaxial cable **51** is electrically interposed between the computer **12** of

FIG. 1 and the circuit 50, with such circuit 50 matching the input impedance Z_{IN} of the loopless antenna 27 to the characteristic impedance Z_0 of the cable 51.

The loopless antenna 27 has a relatively large noise resistance R, which makes it possible 30 to place the circuit 50 relatively far from the antenna 27 without significant SNR performance degradation. This is an important advantage over the relatively low noise resistance coil 18 of FIG. 2 because, during imaging therewith, the matching circuitry (not shown) thereof is preferably placed inside the specimen to eliminate a significant SNR loss.

The circuit 50 includes a direct current (DC) blocking capacitor 52, a matching capacitor 54, and a PIN diode 56. The matching capacitor 54 is electrically interposed in the circuit 50 between the inner conductor 32 and the outer shield 31 of the coaxial cable 29. The PIN diode 56 is electrically interposed between the DC blocking capacitor 52 and the preamplifier 68. The DC blocking capacitor 52 is electrically interposed between the PIN diode 56 and the inner conductor 32 of the coaxial cable 29. The coaxial cable 29 is preferably structured with a suitable diameter for reception within an intravascular system, whereas the circuit 50 and the coaxial cable 51 may have a larger diameter, although the disclosed systems and methods are applicable to a wide variety of impedance matching circuits (e.g., formed from individual discrete components, electronic integrated circuits, other miniaturized circuits).

In receive only mode during RF excitation, RF current may be induced in the antenna 27. In order to resist current induction in the antenna 27 during RF transmission, and obviate resonance of the antenna 27 which may interfere with the flip angle profile, the MR scanner hardware in the RF source 2 of FIG. 1 may provide a positive DC pulse to the antenna 27 for this purpose. The positive DC pulse turns on the PIN diode 56 during RF transmission.

In the exemplary circuit 50, L_1 is the distance between PIN diode 56 and the matching capacitor 54, and L_2 is the distance between matching capacitor 54 and the point 58 (best shown in FIG. 4) intermediate the poles 33, 34 of the loopless antenna 27. The capacitance (C_2) of the matching capacitor 54 and the length L_2 are chosen such that the input impedance Z_{IN} of the loopless antenna 27 is equal to the characteristic impedance Z_0 of the coaxial cable 51. In other words, the length L_2 is adjusted in order that when the PIN diode 56 is on, the coaxial cable 29 behaves like an inductor and resonates with the capacitor 54 to disable a current through the loopless antenna 27, although various designs are possible to achieve this desired performance. Then, the length L_1 is chosen such that when the PIN diode 56 is turned on, the impedance, Z_1 , seen by the loopless antenna 27, becomes as large as possible.

In the exemplary embodiment, a substantial portion (i.e., coaxial cable 29) of the length L_2 may be inserted within the specimen with the circuit 50 external thereto. The exemplary circuit 50 includes a coaxial cable 60 having a center conductor 62 and outer shield 64. The matching capacitor 54 is electrically interconnected between the center conductor 62 and outer shield 64 at one end of the coaxial cable 60. The DC blocking capacitor 52 is electrically disposed at the other end between the center conductor 62 and the PIN diode 56.

For example, with tap water as the medium, the values of the design parameters are: the capacitance (C_1) of the DC blocking capacitor 52 is about 500 pF, C_2 is about 70 pF, L_1 is about 0.06λ , L_2 is about 0.209λ , and Z_0 is about 50Ω , with λ being about 2 times the length L of FIG. 4. Regardless of these values, the performance of the circuit 50 is generally not critical since the input impedance Z_{IN} of the loopless antenna

27 is typically of the same order of magnitude as the characteristic impedance of the coaxial cable 51.

An example of an MR scanner usable in the practice of the disclosed systems and methods is the General Electric (G.E.) 1.5 T Sigma™ MR scanner, although the disclosed systems and methods are applicable to a wide variety of MR scanners having a wide range of main magnetic field strengths. The MR scanner sources RF pulses to a transmitting coil which transmits such RF pulses in order to excite MR signals. As discussed below in connection with FIG. 7, the loopless antenna 27 may also be employed as an RF pulse transmitting source in addition to employment as a receiver antenna.

Preferably, to obviate insertion of any active or passive electronic components in a blood vessel, a $\lambda/2$ cable length, or multiple thereof, is added to the length L_2 . In this manner, the length of the coaxial cable 29 may be extended by up to about several feet to facilitate MR analysis more deeply within the specimen.

EXAMPLE 3

FIG. 7 is a schematic illustration of the loopless antenna 27, the coaxial cable 29, an impedance matching circuit 66, the coaxial cable 51, and a transceiver 69. The receiver (RX) portion of the transceiver 69, through the switch portion 70 thereof, is employed to receive the responsive output signals from the loopless antenna 27. For matching at the time of manufacture, matching circuit 66 is provided with capacitors 71, 72, which are electrically interconnected to the loopless antenna 27 by the coaxial cable 29. The matching circuit 66 maximizes RF power transfer from the antenna 27 to the RX portion of the transceiver 69 which receives and amplifies the output of the circuit 66. In this embodiment, unlike the embodiment of FIG. 6, there is no PIN diode and the loopless antenna 27 provides a transmitter antenna function as well as a receiver antenna function. The transmitter (TX) portion of the transceiver 69, through the switch portion 70 thereof, is employed to transmit the RF pulses to loopless antenna 27.

The matching circuit 66 is preferably placed nearby the loopless antenna 27, although the length of the coaxial cable 29 may be extended up to about several feet in a similar manner as discussed above in connection with FIG. 6. This is especially advantageous in the case where the loopless antenna 27 and the coaxial cable 29 are employed in the manner of a catheter in vivo. The arrangement of the impedance matching circuit 66 in FIG. 7 is not limiting and it will be understood that other impedance matching, tuning and impedance matching, or impedance matching and decoupling arrangements (e.g., inductor/capacitor, a circuit for shorting the coaxial cable, suitable RF switching circuitry, a coaxial cable having an impedance about equal to the impedance of the loopless antenna) will be evident to those skilled in the art.

EXAMPLE 4

FIG. 8 is a cross-sectional view of a loopless antenna 74 and a coaxial cable 29 positioned in an intravascular system such as, for example, within a blood vessel such as a human vein 76. The vein 76 has an interior bore 78 filled with blood 80, and one or more atherosclerotic plaque deposits, such as plaque deposits 82, which are secured to the interior surface 84 of the vein 76. The antenna 74, in the form shown, is connected to the coaxial cable 29 which, in turn, is connected to a suitable circuit, such as the circuit 50 of FIG. 6 or the circuit 66 of FIG. 7, which serves to match the impedance of the antenna 74 with the impedance of the coaxial cable 51 of FIGS. 6 and 7.

The loopless antenna **74** has a first pole **86** and a second pole **88**. The cylindrical outer shield **31** of the coaxial cable **29"** is electrically insulated from the center conductor **32** of such cable **29"** by the dielectric portion **92** thereof. Unlike the antenna **27** of FIG. 4, the antenna **74** does not have a balancing transformer insulator such as insulator **46**.

The second pole **88** includes a cylindrical conductor **94** electrically interconnected with the portion **38** of the inner conductor **32**. Preferably, for use in a patient, the end **96** of the cylindrical conductor **94** is suitably rounded to obviate damaging the patient (e.g., the interior surface **84** of the vein **76**). In this application, the loopless antenna **74** and coaxial cable **29"** are employed in the manner of an invasive probe, such as a catheter, with the matching circuit, such as the circuit **50** of FIG. 6 or the circuit **66** of FIG. 7, located external to the vein **76**. The exemplary loopless antenna **74** and coaxial cable **29"** are elongated along longitudinal axis **97** with a length of up to about 2 m and an external diameter of about 0.3 mm in order to be received within a blood vessel of a patient.

The antenna **74**, cable **29"** and suitable matching circuit (not shown) are employable to acquire MR image information or MR chemical shift information about atherosclerotic plaques. For example, as discussed above in connection with FIG. 1, the computer **12** converts the responsive output signals from the antenna **74** into MR image information, and the CRT **16** displays the MR image information in order to image the vein **76**. It will be appreciated that the cylindrical conductor **94** may alternatively be employed with the antenna **27** of FIG. 4 for high resolution intravascular and other in vivo applications in a patient. It will further be appreciated that the use of the exemplary antenna **74** and cable **29"** may be employed generally simultaneous with a medical, surgical, or interventional procedure on the patient, such as removal of the plaque deposits **82** from the vein **76** by a suitable cutting device (not shown).

Insulating the antenna **74** does not change its electrical properties unless the insulation (not shown) is extensively thick (e.g., greater than about 0.1 mm).

It will be appreciated that the antennas **27** and **74** of FIGS. 4 and 8, respectively, may be employed, for example, in a blood vessel to provide an image and 1-D spectroscopic analysis of plaque built up on the interior of the vessel wall with multislice imaging being provided in an efficient manner due to such elongated antennas being employed. The antennas **27**, **74** may also be employed to examine many other characteristics, such as fatty streaks, calcification, sclerosis, and thrombosis, for example. It will further be appreciated that substantially simultaneously With the use of such antennas and coaxial cables **29**, **29"**, medical intervention as, for example, by laser therapy or destruction of the undesired plaque, may be employed. Similarly, any normal diagnostic or therapeutic measures undertaken with the aid of an endoscope (not shown), may be accomplished substantially simultaneously with the use of such antennas for imaging and/or spectroscopic analysis.

EXAMPLE 5

FIG. 9 is a cross-sectional view of a human pancreas **106** with the antenna **102** and a portion of the coaxial cable **104** positioned in a pancreatic duct **108**. An external dielectric material **100** may be employed as illustrated with the loopless antenna **102** and coaxial cable **104**. The antenna **102** and coaxial cable **104** are employed in the manner of an invasive probe, such as a catheter, during a surgical procedure, associated with the pancreas **106**, on the human patient. The

antenna **102** and coaxial cable **104** are introduced into the human patient to conduct internal MR analysis thereof

The antenna **102** and cable **104** have an external diameter which is structured to be received within a naturally occurring passageway in a human being, such as the opening **110** of the pancreatic duct **108**. This opening **110**, for example, is accessible during surgery on the duodenum **112**, although the antenna **102** and cable **104** are structured to be received within a wide variety of naturally open passageways (e.g., bile duct **114**, urethra, ureter, esophagus, rectum, ear canal, nasal passage, bronchi, air passages) or man-made passageways in a patient. The antenna **102** and cable **104** are flexible, whereby the same may assume a tortuous path upon insertion into the pancreatic duct **108**.

Preferably, the dielectric material **100** is resilient in order to permit flexing of the antenna **102** and cable **104**, and return of the same to their original configuration. Any suitable dielectric material having the properties required to function in this environment may be employed. In general, it is preferred that the antenna **102** and cable **104** be covered by about 5 to about 100 microns of such material. A suitable dielectric may, for example, be a bio-compatible plastic material, or blend having the desired properties. The dielectric material employed may, for example, be tetrafluoroethylene, which is sold under the trade designation, "Teflon." It is known for its fine electrical insulating properties, does not interact with any components in water, and can be safely used in blood vessels. The purpose of the dielectric material **100** is to provide bio-compatibility. However, a relatively thick insulation (e.g., greater than about 0.1 mm) will improve SNR at the cost of thickening the antenna **102** and cable **104**.

It will be appreciated that the antenna **102**, cable **104** and suitable impedance matching circuit are employable with other specimens. For example, the image of the aorta of a live rabbit (not shown) may be obtained. The antenna **102** and cable **104** may be inserted from the femoral artery of the rabbit. Although the rabbit femoral artery is typically very small (e.g., approximately about 1 mm in diameter), catheter-like insertion is easily performed with the exemplary antenna **102** and cable **104**.

Any suitable method, such as X-ray fluoroscopic imaging, may be employed to confirm the placement of the antenna **102** in the specimen. It will be appreciated that the placement of the antenna **102** may also be confirmed by a wide variety of other imaging methods. It will further be appreciated that the insertion of the antenna **102** into the patient may be accomplished by direct insertion of the antenna **102** and cable **104** into a suitable blood vessel, by insertion through a catheter guide, and by a wide variety of insertion methods.

FIG. 10 is a log-log plot of theoretical SNR (shown as a line **116**) and measured SNR (shown as discrete diamonds **118**) with respect to radial distance from the longitudinal axis **48** of the antenna **27** of FIG. 4. For example, pulse sequences may be employed which allow a voxel size of 0.16x0.16x1.5 mm. Images may be acquired with an 8 cm FOV, 512x512 data acquisition matrix, 1.5 mm slice thickness, 2 NEX, and 16 KHz receiver bandwidth. Such imaging parameters correspond to an effective pixel bandwidth of 0.06 Hz and permit 12 slices of similar images to be obtained in about ten minutes.

The exemplary antenna **27** and cable **29** of FIG. 4, and suitable matching circuit provide a relatively high resolution of the specimen, such as human tissue, to a radial distance of about 10 mm from the longitudinal axis **48**, and can be employed to image to radial distances of about 20 mm or greater. Near-microscopic resolution can be obtained in the immediate vicinity of the antenna **27**. Increasing the main

magnetic field strength improves the resolution significantly and enables imaging with smaller voxel volume.

FIG. 11 is a contour plot of theoretical SNR as calculated for a balanced loopless antenna similar to the antenna 27 of FIG. 4. The calculation assumes that pulse sequences are employed at 1.5 T main magnetic field strength, with a 160×160×1500 micron voxel size and an effective pixel bandwidth of 0.06 Hz. The units on the horizontal and vertical axes are in centimeters. The balanced loopless antenna is situated in the center of the plot at 0 cm of the horizontal axis and extends from -10 cm to 10 cm of the vertical axis.

EXAMPLE 6

FIG. 12 is a schematic cross-sectional illustration showing a loopless antenna 120 in the form of a biopsy needle 121. The antenna 120 is employed in vivo on a patient 122. The body 123 of the patient 122 contains a lesion 126. The antenna 120 serves to image the lesion 126 in vivo before a sample 128 of the lesion 126 is taken by the biopsy needle 121. This enables more accurate biopsy needle positioning. The antenna 120 is formed at the end of a coaxial cable 130 having an outer shield 132 and an inner conductor 134 which is electrically insulated from such shield 132 by a dielectric portion 136. The biopsy needle 121 can slide inside a non-conducting sheath 138. The antenna 120 has a first pole 140 formed by the shield 132, and a second pole 142 formed by the biopsy needle 121 which is electrically connected to the portion 143 of the inner conductor 134, and which is electrically insulated from the shield 132 by the dielectric portion 136. The antenna 120, coaxial cable 130 and biopsy needle 121 are composed of materials which are magnetic resonance compatible, such as a conductors or dielectric insulators as distinguished from a steel material, for example. The end of the coaxial cable 130 opposite the biopsy needle 121 is preferably electrically interconnected with a suitable impedance matching circuit such as one of the circuits 50 and 66 of FIGS. 6 and 7, respectively.

FIG. 13 is a representation of the spectra of three adjacent voxels along the length of the catheter coil 18 of FIG. 2 which are established by the computer 12 of FIG. 1 to determine the chemical shift spectra at those locations. It is believed that a comparable spectra may be acquired along the length of the loopless antenna 27 of FIG. 4. The spectra of three adjacent voxels is shown in FIG. 13 with peaks 146, 148, 150 representing water signals from the three regions and peaks 152, 154 from lipid signals in or adjacent to the region of interest, such as blood vessel walls. Water and lipid peaks will tend to vary between normal and atherosclerotic vessels.

EXAMPLE 7

FIG. 14 is a cross-sectional view of a coaxial cable 29" and a dipole antenna 74' similar to the loopless antenna 74 of FIG. 8. The dipole antenna 74' has a first pole 86 and a second pole 88'. The second pole 88' includes a mechanical loop conductor 94' electrically interconnected with the portion 38 of the inner conductor 32. Preferably, for use in a patient, the end 96' of the mechanical loop conductor 94' is suitably rounded to obviate damaging a patient (not shown). The exemplary mechanical loop conductor 94' has a generally oval shape, although a variety of shapes are considered which are electrically isolated from the first pole 86. This is contrasted with the conventional catheter coil 18 of FIG. 2 in which one of the conductors 19,20 may be connected to a coaxial cable shield and the other conductor may be connected to a coaxial cable inner conductor, thereby forming an electrical loop.

EXAMPLE 8

FIG. 15 is a schematic illustration of the loopless antenna 27 employed in combination with the catheter coil 18 of FIG. 2. The conductor 19 of the catheter coil 18 is connected to outer shield 156 of coaxial cable 158 and the conductor 20 is connected to inner conductor 160 thereby forming an electrical loop. Also referring to FIG. 1, the coaxial cable 158 is connected to one preamplifier 68' of the receiver 8. The coaxial cable 29 of the loopless antenna 27 is connected to another preamplifier 68 of the receiver 8. Both the coil 18 and the antenna 27 receive MR signals and emit corresponding output signals which are converted by the converter 10 and are received and processed by the computer 12 in order to combine the same into MR information for display by the CRT 16. Preferably, the coil 18 and the antenna 27 are mounted coaxially in order to facilitate use of the better SNR performance of the coil 18 at relatively small distances from the common axis and the better SNR performance of the loopless antenna 27 at relatively large distances therefrom. It will be appreciated that other types and number of coils may be employed with the preamplifier 68' (e.g., two back-to-back solenoid coils, a pair of quadrature coils) in combination with the antenna 27.

The exemplary antennas 27, 74, 120 disclosed herein increase SNR and provide suitable resolution in MR imaging of blood vessels. The sensitivity of the antennas 27, 74, 120 decays approximately as the inverse of the radial distance from the antenna longitudinal axis. Hence, it provides useful SNR in a cylindrical volume around such antennas. The antennas 27, 74, 120 allow electronic circuits to be placed outside the body and can be easily constructed to a very thin diameter which obviates the size and mechanical property restrictions of catheter coils. The physical dimensions of the antennas 27, 74 make it practical for insertion into blood vessels. The antennas 27, 74, 120 have a low quality factor (Q) and, hence, do not require appreciable tuning when inserted in non-linear intravascular systems.

The simple structure of the antennas 27, 74 makes it possible to construct and operate these devices in a reliable manner in various imaging techniques, such as multislice MRI, 3-D MRI, or 1-D spectroscopy, and in various interventional techniques on a wide variety of specimens. The exemplary loopless antenna 120 and MR compatible biopsy needle 121 facilitate the same in addition to providing the capability of conducting imaging before a biopsy sample is removed from a patient.

Pathogenesis of a blood vessel wall due to atherosclerosis is difficult to characterize by conventional techniques which only investigate the vascular lumen. Intravascular MRI has the unique potential to characterize all three layers of the vessel wall, plaque extent, and composition, as well as thickness and extent of the fibrous cap. The goal of high resolution imaging of atherosclerotic plaques can only be achieved by increasing the SNR of the acquired images. The exemplary antennas 27, 74 greatly increase sensitivity to the target plaque.

The development of new MRI scanners has led to interventional possibilities which will benefit from the intravascular loopless antennas 27, 74. Interventional techniques for atherosclerotic disease may be monitored using real-time, high resolution MR imaging techniques. In addition to precise guidance of laser angioplasty and atherectomy procedures, these apparatus and methods may be used to fully stage lesions and serve as an experimental tool in assessing new therapeutic applications to atherosclerotic disease. Furthermore, with the resulting intravascular MR imaging system,

reliable diagnostic information on atherosclerosis may be obtained and MR-guided interventions may be performed with high precision.

It will be appreciated, therefore, that the disclosed systems and methods facilitate enhanced MR imaging and 1-D chemical shift analysis of the interior of a specimen. The loopless antenna **74** provides a generally uniform sensitivity along the longitudinal axis of the dipoles **86**, **88** and, as a result of the use of such antenna, facilitates a longer portion of the specimen being imaged with one antenna position. Further, no tuning is required after insertion of the antennas **27**, **74**, **120** into a specimen. These antennas, in addition to serving solely as a receiver antenna in one embodiment, may in another embodiment function as a transmitter antenna and a receiver antenna. The disclosed systems and methods may be employed generally simultaneously with medical intervention, such as, for example, laser removal of blood vessel plaque.

An embodiment provides enhanced efficiency through the use of at least one of a balancing transformer and an impedance matching circuit.

EXAMPLE 9

FIG. **16** shows a schematic diagram of an exemplary embodiment of a needle antenna and associated decoupling matching and tuning circuitry. In the illustrated exemplary embodiment, the needle antenna is a biopsy or sample needle **1610** that permits imaging and sampling of a tissue specimen with a single instrument. A needle according to the illustrated exemplary embodiment could be used to obtain a biopsy, or a sample from a variety of structures, including living tissue and inanimate matter. The biopsy needle **1610** and associated circuits **1650** can be fabricated from non-magnetic materials. The biopsy needle **1610** may have a cutting obturator **1611** with side-cut or side-slit **1612**. The needle **1610** may have a hollow core near its distal end **1619**. The needle can have a cannula or sheath **1613**, which can form the shield portion of an MRI antenna, preferably a loopless antenna, and can be electrically connected to the ground or shield side of the decoupling matching and tuning circuit **1650**, by connection **1651**. An extending portion **1640** of the obturator **1611**, may serve as part of the MRI antenna. The obturator **1611**, including a portion **1617** thereof can effectively act as an inner conductor of a coaxial cable portion with an outer conductor formed by the cannula **1613**. A thin-walled electrically insulating layer **1618**, may be located between the obturator **1611** and the cannula **1613**. The insulator **1618** may extend at least to as far as the ends **1613a** and **1613b** of the cannula **1613**, to insulate the obturator **1611** in the cannula **1613** up to the side-slit **1612**. The insulation layer can be any of a range of known electrical insulators including but not limited to a polymer such as a polyester shrink tubing, fluoroethylene polymer, tetrafluoroethylene, polyethylene, silicone, metal oxide, glass, polyethylene terephthalate, or the like. The outside of the cannula **1613** may be covered with an insulating layer, such as with a biocompatible polymer coating.

The biopsy needle **1610** can be connected to decoupling, tuning and matching circuitry **1650** via, e.g., connections **1651** and **1652**. These connections can be made directly via one of the many types of detachable RF connector known to those skilled in the art, or, for convenience, via an additional section of thin coaxial cable, which can be permanently attached to circuitry **1650**, or attached via a detachable RF connector. The decoupling, tuning and matching circuitry may include a balun **1653**, which serves to balance any currents induced on the biopsy needle antenna at the MRI fre-

quency. This can be formed, for example, from an LC tank circuit made by tuning a coil formed by the outer conductor of a coiled piece of coaxial cable, to the MRI resonance frequency with a capacitor, as is known to those skilled in the RF arts. A capacitor, C_2 , may be provided to block direct current from flowing into the antenna circuit. A (PIN) diode **D** can be connected across the rails that attach to the loop antenna on the proximal side of C_2 . A further capacitor, C_3 , and an inductor, L_2 , can alone or together be added as tuning and impedance matching elements. The values of L_2 and C_3 , in conjunction with C_3 , are preferably chosen to tune the antenna formed by the biopsy needle **1610** (cannula **1613** and obturator **1611**) to the MRI frequency, and also to substantially match the impedance to the optimum impedance of the MRI scanner receiver input connected at **1661** and **1662**. This impedance is preferably that which results in the optimum noise figure of the MRI receiver preamplifier, and is typically 50Ω , the characteristic impedance of standard coaxial cable. Connections **1661** and **1662** can be formed by 50Ω coaxial cable, or connected directly to the MRI receiver input.

Diode **D** can decouple the antenna during the period when the RF pulses are applied to excite MRI signals. During MRI excitation by an external transmit coil, a DC bias voltage may be provided by the MRI scanner across the coil input, causing the diode to conduct. During conduction, the tuning elements can be shorted-out, which results in detuning of the loopless antenna biopsy needle, and high impedance, thereby limiting those RF currents induced at the MRI frequency in the loop.

FIG. **17** illustrates exemplary electrical connections of the exemplary biopsy needle MRI antenna described above in connection with FIG. **16**, and a plunger mechanism for activating the acquisition of a biopsy specimen, in accordance with an embodiment. The cannula **1713**, which can function as the shield, may be electrically connected to a loading spring **1720** by a joint **1721**. The spring **1720** may be non-magnetic. Joint **1721** may be a wire. The spring **1720** can thereby serve two purposes. First, the spring **1720** may act as a compression spring to load and trigger the movement of the cannula **1713** that cuts the tissue. Second, the spring **1720** can act as a deformable conductor that connects the shield that can be formed at least in part by the cannula **1713**, to the matching circuitry **1650** at connector **1651** in FIG. **16**. The electrical connection can be made, e.g., by connecting the spring **1720** to lead **1651**, which in an embodiment is the outer shield of a section of flexible coaxial cable.

The proximal end **1711a** of the obturator **1711** can be secured to, e.g., a plunger button **1722**. The proximal end **1711a** may be covered with, e.g., ultraviolet cure adhesive. An electrical connection **1723** can be made from the proximal end **1711a** of the obturator **1711**, which can form the inner conductor of an MRI antenna, to the connection **1652** of the tuning matching and decoupling circuit **1650**, as depicted in FIG. **16**. In an embodiment, the device may include a flexible coaxial cable connection (not shown) between the needle antenna and circuitry **1650**. Connection **1652** may preferably be the inner conductor of the coaxial cable.

FIGS. **18** and **19** depict two exemplary positions that a biopsy needle can adopt. FIG. **18** shows a biopsy needle **1810** in a charged position. In this position, the spring **1820** is compressed. The obturator **1811** can be rigidly coupled to the plunger **1822** and slideably displaceable relative to the cannula **1813**. As the plunger **1822** is pulled in a proximal direction, a plastic clip **1890** can compress the spring **1820**. The side-slit **1812** of the obturator **1811** can be exposed, and the cannula **1813** can be retracted relative to the obturator **1811**. FIG. **19** depicts a biopsy needle **1910** in an uncharged position. The spring **1920** can be relaxed. The side-slit **1912** of the

obturator **1911** can be covered by the cannula **1913**. A biopsy **1980** can be coupled to the biopsy needle antenna **1910**. In this exemplary embodiment, the biopsy **1980** is trapped between the cannula **1913** and the obturator **1911**, in the side-slit **1912**.

With reference to FIG. **18**, to operate the tissue sampling function of the biopsy needle **1810**, the plunger **1822** can be pulled in the proximal direction, which can charge the loading spring **1820** until a locking mechanism (not shown) locks in place. The locking mechanism may include, e.g., a notch. Once the spring is locked, the plunger **1822** may be freely pushed or pulled, thereby advancing or retracting the obturator **1811** out from or into the cannula **1813**, respectively. A high quality image may be obtained in a variety of obturator positions, particularly when the obturator **1811** is extended from the cannula **1813**, as depicted. Once the needle has been positioned for the biopsy or sampling, the plunger **1822** may be forcefully pushed distally. This can release the locking mechanism so that the cannula **1813** is propelled forward by the releasing spring **1820**. A sharp-edged front-end **1813b** of the cannula cuts the tissue sample intact within the slide-slit portion **1812** as the biopsy needle transitions to the state depicted in FIG. **19**.

FIG. **20** illustrates an exemplary embodiment of an obturator **2011** in more detail. The obturator **2011** can have a distal end **2070**. The distal end **2070** can be sharp and designed for piercing, e.g., tissue. The obturator **2011** can have a side-slit **2012** for receiving a portion of a tissue as a biopsy (not shown). The obturator **2011** can have a shaft **2017**. The shaft can serve as the inner conductor of a coaxial cable. The obturator **2011** can be covered by an insulator **2018**. The insulation may include, for example, a shrink-tubing that can fit snugly over the obturator **2011**. The insulator can fill the space between the obturator **2011** and a cannula (not shown). The insulator **2018** can fill a portion of the space between the obturator **2011** and the cannula. Air can fill at least a portion of the space between the obturator **2011** and the cannula. The insulator may include a lubricious substance to facilitate sliding of the cannula over the obturator **2011**, or sliding of the obturator **2011** within the cannula. A lubricious coating (not shown) may cover the insulator **2018** for similar purposes. The insulator **2018** and lubricious substance or coating may include suitable materials described herein. In an embodiment, the obturator **2011** has a diameter of 0.067" at distal region **2017b** and proximal region **2017a**, and a reduced diameter of 0.055" in region **2017c** to accommodate an insulation layer of 0.010" thickness. In an embodiment, the movement of the obturator **2011** inside the cannula **2013** is not obstructed. The thin section can be covered with electrical insulation **2018**, as detailed above. Insulation **2018** can function as both electrical insulation and dielectric portion of the antenna. The specific dimensions described are provided for illustrative purposes and are not intended to be limiting. It will be understood to one skilled in the art that such needle biopsy antenna devices can be fabricated for a variety or range of different sizes, for example, with an obturator diameter in the range of 0.03" to 0.15".

FIG. **21** shows a block diagram illustrating the operation of an MRI scanner system, which may be used in connection with an embodiment. A magnet can be provided for creating the magnetic field necessary for inducing magnetic resonance. Within the magnet can be X, Y, and Z gradient coils for producing a gradient in the static magnetic field in three orthogonal directions. Within the gradient coils may be an external RF excitation coil. The external RF excitation coil can produce the magnetic field necessary to excite the MRI signals in the body. A computer can be provided for control-

ling all components in the MRI scanner. This includes the RF frequency source, spectrometer and pulse programmer. The pulse programmer can generate a controlled time-sequence of shaped and/or phase or frequency-modulated RF pulses that are delivered to the RF power amplifier. The RF power amplifier may have pulse power of 1-20 kW, which is applied to the external RF excitation coil. The computer can also control the gradient magnetic field by providing a sequence of modulated pulses that are synchronous with the RF pulse sequence, to gradient power amplifiers, which in turn activate the X, Y, and Z gradient magnetic field coils in the magnet. Signals detected by receiver coils in response to the applied RF/gradient imaging sequences, including those detected in the aforementioned multi-functional MRI catheter system, can be coupled to a receiver preamplifier. These signals may be amplified, phase sensitive detected, for example, by converting to digital signals and being fed to a digital receiver. The digital image data may then be reconstructed in the computer and displayed as images on a monitor or the like.

An embodiment provides accurate localization of the biopsy needle tip. Because the needle antenna is a receiver it can be used to directly image the tissue around it. This image can be viewed on with high resolution employing the needle antenna receiver disclosed herein, or, it can be viewed at low resolution as an overlay on a large field-of-view "scout" image obtained with an auxiliary coil outside the body. The location of the needle antenna can be tracked in the body, by the bright line of signal moving in the scout image. The scout image can be updated at an interval set by the user to compensate for patient motion. An interactive control can allow the physician to "zoom in" towards the bright catheter, finally resulting in a high-resolution image in the area of the distal needle tip. The "zoom" function can be achieved with interactive control of the imaging gradients.

EXAMPLE 10

FIGS. **22A** and **22B** show images acquired with an MRI biopsy needle. FIG. **22A** depicts a bovine kidney with a biopsy needle antenna inserted therein. The uniform signal intensity of the kidney is typical of renal MRI imaging. The needle antenna is clearly discernable. FIG. **22B** depicts a lemon with a biopsy needle antenna inserted therein. The radiating fibrous structure is readily visible, as are seeds inside the lemon. The biopsy needle position is accurately localized with respect to the lemon.

FIGS. **23A-F** depict a sequence of images from an image-guided biopsy procedure. FIG. **23A** depicts the initial introduction of a biopsy needle antenna into the pig anatomy. FIG. **23B** depicts deeper insertion. FIG. **23C** depicts full insertion of the biopsy needle antenna prior to biopsy acquisition. FIG. **23D** depicts the biopsy needle antenna after biopsy acquisition. FIG. **23E** depicts withdrawal of the biopsy needle antenna. FIG. **23F** depicts the pig anatomy after the biopsy needle has been withdrawn completely.

Preferred embodiments may include an MRI biopsy needle; an MRI biopsy needle connected and used in conjunction with matching tuning decoupling circuitry; an MRI biopsy needle and matching tuning decoupling circuitry used in conjunction with an MRI scanner; and a method for performing image-guided biopsies employing an MRI biopsy needle antenna, tuning matching and decoupling circuitry in conjunction with an MRI scanner.

While for clarity of disclosure reference has been made herein to display means for displaying an image, it will be

appreciated that the image information may be stored, printed on hard copy, be computer modified, or be combined with other data. All such processing shall be deemed to fall within the terms “display” or “displaying” as employed herein.

Various alternative embodiments are envisioned within the scope of the disclosed systems and methods. Figures provide illustration of some inventive aspects of the disclosed systems and methods. Therefore, relative or absolute dimensions in the Figures should be understood as exemplary and not as limiting. Whereas particular embodiments have been described herein for purposes of illustration, it will be appreciated by those skilled in the art that numerous variations of the details may be made without departing from the disclosed systems and methods as described in the following claims.

That which is claimed:

1. A biopsy needle antenna, comprising:
 - a cannula being formed at least in part of a conductive material;
 - an obturator being formed at least in part of a conductive material, the obturator being slideably displaceable relative to the cannula, wherein the cannula and obturator are configured and arranged to cut and capture a biopsy sample by sliding displacement of the obturator relative to the cannula;
 - an insulator electrically insulating the cannula from the obturator, wherein the cannula, obturator and insulator cooperate to define an MRI antenna and wherein the insulator is configured as an electrical insulator and a dielectric for the antenna; and
 - a connector coupled to the cannula and the obturator and configured and arranged to connect the biopsy needle antenna to a magnetic resonance interface circuit.
2. A biopsy needle according to claim 1, wherein the obturator defines an inner conductor of a coaxial cable and the cannula defines an outer conductor thereof.
3. A biopsy needle according to claim 1, wherein the insulator resides snugly against the outer wall of the obturator.
4. A biopsy needle according to claim 1, wherein the obturator has a diameter in the range of 0.03 inches to 0.15 inches.
5. A biopsy needle according to claim 1, wherein the obturator has a sharp distal end portion that merges axially upstream into a side slit formed into an outer wall of the obturator, the side slit defining an entry into a biopsy sample chamber in the obturator.
6. A biopsy needle according to claim 5, wherein a distal end of the obturator is configured to slideably advance toward the cannula to obtain a biopsy sample of local tissue and hold the biopsy sample in the biopsy sample chamber.
7. A biopsy needle according to claim 6, further comprising a plunger that directs the cannula or the obturator to cut a biopsy sample of local tissue.
8. A biopsy needle according to claim 1, wherein the obturator has a tissue penetrating sharp end that resides outside the cannula during in vivo MRI guided placement.
9. A biopsy collection and MRI antenna device, comprising:
 - a cannula being formed at least in part of a conductive material;

an obturator being formed at least in part of a conductive material, wherein at least one of the obturator and cannula are slideably displaceable relative to the other; an insulator electrically insulating the cannula from the obturator; and

a connector coupled to the cannula and the obturator and configured and arranged to connect the biopsy collection and MRI antenna device to a magnetic resonance interface circuit, wherein the obturator, insulator and cannula cooperate to define an MRI antenna for an MRI guided biopsy procedure.

10. A device according to claim 9, wherein the obturator defines an inner conductor of a coaxial cable and the cannula defines an outer conductor thereof, and wherein the sliding movement causes the cannula to cooperate with the obturator to cut and capture a biopsy sample.

11. A device according to claim 9, wherein the insulator resides snugly against the outer wall of the obturator.

12. A biopsy needle according to claim 9, wherein the cannula, obturator and insulator cooperate to define an MRI antenna, and wherein the insulator is configured as an electrical insulator and a dielectric for the antenna.

13. A biopsy needle according to claim 9, wherein the obturator has a diameter in the range of 0.03 inches to 0.15 inches.

14. A biopsy needle according to claim 9, wherein the obturator has a sharp, tissue-penetratable distal end portion that merges axially upstream into a side slit formed into an outer wall of the obturator, the side slit defining an entry into a biopsy sample chamber in the obturator.

15. A biopsy needle according to claim 14, wherein a distal end of the cannula is configured to slidably advance toward the cannula to obtain a biopsy sample of local tissue and hold the biopsy sample in the biopsy sample chamber.

16. A biopsy needle according to claim 9, further comprising a plunger that directs the cannula or the obturator to cut a biopsy sample of local tissue.

17. A magnetic resonance imaging antenna, comprising:

- an inner conductor;
- a conductive outer shield slideably displaceable with respect to the inner conductor; and
- an insulator electrically insulating the inner conductor from the outer shield, the inner conductor, conductive outer shield and insulator cooperate to define a magnetic resonance imaging antenna and wherein the insulator is configured as an electrical insulator and a dielectric for the antenna;

wherein the inner conductor is an obturator with a sharp end portion and a biopsy sample hollow chamber, wherein the outer shield is a cannula that resides over at least a portion of the obturator, and wherein, in operation, at least one of the obturator and cannula slidably translates relative to the other to cut and capture a local biopsy sample using the antenna to perform an MRI guided biopsy procedure.